

Historic, Archive Document

Do not assume content reflects current scientific knowledge, policies, or practices.

Carroll Gardens

LIBRARY
 RECEIVED
 FEB 19 1950
 U. S. Department of Agriculture

SPRING GARDEN GUIDE 1950 WESTMINSTER, MARYLAND



Three of the Roses Most
 Talked About. All Three
 Top Winners of National
 and International Honors

PEACE
 Pat. 591
\$2.00 each, 3 for \$5.00
 For Climbing Peace, see
 page 25



COLLECTION

OFFER 5S-1
 1 of each for \$5.75
 You save 75c
 OFFER 5S-1A
 3 of each for \$14.75
 You save \$1.55

For description of these
 and complete list of Roses
 see pages 20 to 26



FASHION
 Pat. 789
\$2.00 each, 3 for \$5.00

SUTTER'S GOLD
 Pat. 885
\$2.50 each, 3 for \$6.30



Dependable Low-Growing Hardy Rock-Garden Plants, also used for low border plants



DIANTHUS, Bobby (Hardy Pink). 6 to 10 in. Rose-pink flowers with crimson center. May, June and again later in summer. Ideal for sunny places.



DWARF ALPINE ASTERS. Large lavender daisies on 6 to 10-inch stems. May, June. Plant in sun or partial shade.



MYOSOTIS palustris semperflorens (Perennial Forget-Me-Not). 8 in. Blooms continuously from late spring to frost. Plant in moist, partly shaded location. Must be watered during the summer.



AETHIONEMA, Warley Rose (Persian Candytuft). Lovely heads of pink flowers on 6-inch stems, May, June. Silvery green foliage all year.



ALYSSUM saxatile compactum (Basket of Gold). 12 in. Yellow flowers in May. Silvery foliage. Plant in sunny, dry place.



DICENTRA eximia (Fringed Bleeding-Heart). 1 ft. Pink blooms from April to fall. Excellent for sun or shade.



HARDY PRIMROSE (Cowslip). 6 to 8 in. Ideal plants for shady, moist places. Show of various colors in early spring.



CAMPANULA carpatica (Bellflower). 8 to 12 in. Large, cup-shaped, blue flowers during the summer months. Ideal for sun or part shade.



HELIANTHEMUM (Rock or Sun-Rose). 8 to 10 in. Ideal plants for sunny places. May, June. Available in double and single yellow, red, and pink.



IBERIS sempervirens (Hardy Candytuft). 10 to 12 in. White flowers in spring. Evergreen foliage. Best in sun.



CREeping THYME. Low, creeping plants for rock gardens, ground-covers and to plant in flagstone walks and steps. Pink or white flowers (specify color wanted). Evergreen foliage all year. Does best in sunny, well-drained location.



SEDUM Sieboldi. Blooms in late September and October. Deep pink flowers on 6-inch stems. Silvery foliage. Sun or shade.



EPIMEDIUM (Barrenwort). Interesting plants blooming in early spring. The foliage remains attractive all summer. Ideal for shade.



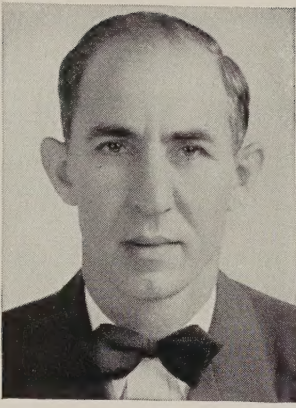
VERONICA rupestris. Creeping plant with deep blue flowers in May and June. Sun or part shade.



PHLOX subulata (Mountain Pink). A well-known plant with purple-pink flowers in early spring and evergreen foliage throughout the year. Plant in full sun only.

*All Plants
shown on this page*
3 of any one kind \$1.25
6 of one kind \$2.25
12 of one kind \$4.25

Special Offer
18 plants,
3 each of any 6 varieties,
your selection, for only \$6.25
(You save \$1.25)



P. DONOFRIO, Pres.

A Sincere Message to Our Customers:

TO OUR ever-growing number of friends I want to say "Thanks again" for the wonderful response to our Catalogs. It is gratifying to learn from your letters and from your orders that our efforts to bring you the very finest bulbs, plants and roses have pleased you. And I want to thank particularly our many, many friends who have recommended Carroll Gardens to others.

Now, as we approach the spring season, we take pride in presenting our new 1950 Spring Planting Guide and Catalog, featuring the newest and very best perennials, roses, bulbs, shrubs, etc. We sincerely believe that the offerings in this Catalog are the finest that are obtainable anywhere, and will produce outstanding results for you.

Yours for better gardens,
P. DONOFRIO, President

When to Order

Send in your order at once, or as soon as possible. Shipment of all items ordered will be made to arrive at the proper time for planting in your vicinity. You will insure the best possible handling of your order by getting it to us early. If you request special date for shipment, we will make every effort to comply, but cannot guarantee exact delivery.

PLEASE NOTE

As we have mentioned before, we don't like to "toot our own horn," but we can't keep from doing it when we receive such comment as this from Emma M. Ulrich, 2243 Bakewell Street, Toledo, Ohio, "I just can't help telling you how pleased I am with the roses, mums, etc., that you sent me on my order last fall. The tulips and lilies and hyacinths were gorgeous and the envy of my neighbors. Believe me, when I order anything further it will be from your company. The cost is a little more but the results are amazing."

GUARANTEE

We guarantee any plants or bulbs we sell to be true to name and to reach you in fresh, healthy condition. On items that prove not to be as represented, we will replace or refund the purchase price. Any necessary claims should be made as soon as possible.

TERMS

Unless you have established credit with us, send cash, check or money order with your order. Because of the perishable nature of the material, no C.O.D. orders can be accepted. To establish credit, send two financial references.

After your order has been placed, please do not ask us to change or cancel it. During the shipping season several thousand orders are handled, and it is impossible to look for any one particular order without spending hours of time.

TRANSPORTATION

We prepay transportation charges on orders of \$3.00 or more if East of the Mississippi. West of the Mississippi, add 10% to the amount of the order. On all orders of less than \$3.00, add 35c for packing and postage.

Note: Certain orders for heavy shrubs, trees, etc., must be shipped by Parcel Post or Express Collect.

"VISITORS WELCOME"

That sign is always out at Carroll Gardens. We welcome your visit and urge you to come at any time to see our display grounds and nursery. We are located on U. S. Route 140, at Fairground Hill just south of Westminster, Maryland, only 28 miles from the city of Baltimore and 22 miles from historic Gettysburg, Pennsylvania.

IF YOU HAVE A PROBLEM

The free booklets offered on the order form are designed to help you plan and care for your garden. If, however, you have particular questions regarding plant selection on which you want advice, write us and we will do our best to assist and advise you. Frequently we can suggest varieties not listed in the Catalog.

INDEX

| | Page | | Page | | Page | | Page |
|---|------|---------------------------------|--------|-------------------------|-------|--|---------|
| BULBS | | Armeria..... | 7 | Hibiscus..... | 10 | Scabiosa..... | 40 |
| Acidantha..... | 19 | Artemisia..... | 5 | Hollyhock..... | 10 | Sedum..... | 2,17 |
| Amaryllis..... | 19 | Asclepias..... | 7 | Iberis..... | 2,10 | Shasta Daisy..... | 13 |
| Begonia..... | 18 | Asters..... | 2,7,40 | Lathyrus..... | 10 | Silene..... | 17 |
| Calla Lily..... | 19 | Astilbe..... | 8 | Lavandula..... | 11 | Statice..... | 17 |
| Dahlia..... | 19 | Baptisia..... | 8 | Liatriis..... | 11 | Stokesia..... | 17 |
| Gladiolus..... | 18 | Campanula..... | 2,8 | Lily-of-the-Valley..... | 11 | Tarragon..... | 14 |
| Gloriosa Lily..... | 19 | Carnation..... | 6 | Linum..... | 10 | Thalictrum..... | 17 |
| Gloxinia..... | 19 | Catananche..... | 8 | Lobelia..... | 11 | Thymus..... | 14 |
| Ismene..... | 19 | Centaurea..... | 8 | Lupins..... | 11 | Tradescantia..... | 17 |
| Lilies..... | 27 | Chives..... | 14 | Lychnis..... | 11 | Tritoma..... | 17 |
| Montbretia..... | 19 | Chrysanthemums..... | 32-39 | Lythrum..... | 11 | Trollius..... | 17 |
| Oxalis..... | 19 | Chrysanthemum maxi- mum..... | 13 | Matricaria..... | 12 | Tunica..... | 17 |
| Tigridia..... | 19 | Cimicifuga..... | 8 | Monarda..... | 11 | Verbena..... | 17 |
| Tuberose..... | 19 | Convolvulus..... | 12 | Myosotis..... | 2,12 | Verbena, Lemon..... | 14 |
| EVERGREENS, Coniferous | | Coreopsis..... | 8 | Nepeta..... | 12 | Veronica..... | 2,17,40 |
| Arborvitae..... | 14 | Coronilla..... | 8 | Nierembergia..... | 12 | Vinca..... | 17 |
| Juniper..... | 14 | Delphinium..... | 8 | Onothena..... | 12 | Viola..... | 16,17 |
| Retinospora..... | 14 | Dianthus..... | 2,6 | Pachysandra..... | 12 | Violet..... | 17 |
| Yews..... | 14 | Dicentra..... | 2,8 | Penstemon..... | 12 | ROSES | 20-26 |
| FRUITS | | Dictamnus..... | 9 | Peony..... | 12 | SHRUBS and TREES, Deciduous Flowering | |
| Blueberries..... | 27 | Digitalis..... | 9 | Phlox..... | 2,15 | Azalea..... | 28 |
| Strawberries..... | 27 | Echinops..... | 40 | Physostegia..... | 12 | Buddleia..... | 30 |
| HERBS | 14 | Epimedium..... | 2,9 | Platycodon..... | 16 | Callicarpa..... | 28 |
| PERENNIAL BORDER, How to Make a..... | 4 | Eupatorium..... | 8 | Plumbago..... | 16 | Polemonium..... | 28 |
| PERENNIALS and ROCK-PLANTS | | Funkia..... | 9 | Polemonium..... | 16 | Cherry, Flowering..... | 31 |
| Achillea..... | 5 | Gaillardia..... | 9 | Poppy, Oriental..... | 16 | Clethra..... | 30 |
| Aconitum..... | 5 | Geranium..... | 9,14 | Potentilla..... | 12 | Crab, Flowering..... | 31 |
| Aethionema..... | 2 | Geum..... | 9 | Primroses..... | 2,16 | Crape Myrtle..... | 30 |
| Ajuga..... | 5 | Gypsophila..... | 9 | Pyrethrum..... | 16 | Cydonia..... | 28 |
| Allium..... | 5 | Helenium..... | 10 | Rosemary..... | 14 | Dogwood..... | 31 |
| Alyssum..... | 2,5 | Helianthemum..... | 2,10 | Rudbeckia..... | 16 | Forsythia..... | 28 |
| Anchusa..... | 5 | Helianthus..... | 9 | Salvia..... | 17,40 | Franklinia..... | 29 |
| Anemone..... | 7 | Heliopsis..... | 9 | Saponaria..... | 17 | Hypericum..... | 28 |
| Anthemism..... | 7 | Helleborus..... | 10 | | | Lilac..... | 28 |
| Aquilegia..... | 5 | Hemerocallis..... | 13 | | | | |
| | | Heuchera..... | 10 | | | | |

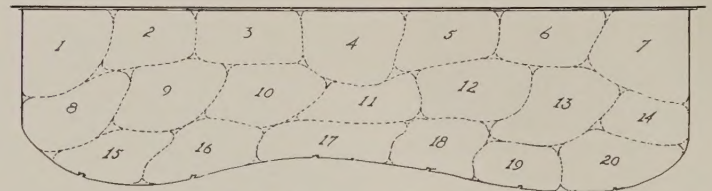


AN EFFECTIVE BORDER PLANTED WITH PERENNIALS AND BIENNIALS

Plan a perennial border as a part of your outdoor living-room. A well-planted border is colorful and fits into any garden scheme. You will be proud to show your friends the results of your efforts.

There are many ways to plant a perennial border. If you are planning on carrying out a formal garden, a straight-line border fits better in your scheme, such as shown above. But if you are trying to carry out an informal scheme, a curved border would be better, as shown on the plan below. A perennial border is always best planted along a border or dividing line, along a picket fence or in front of shrubbery. It is never advisable to put it in the middle of the lawn. The length as well as the width depends on the space that you have available. **Our perennial booklet, offered free on our order sheet, will go more into detail regarding planting a perennial border. You will find it helpful.**

Here's How— to Make a Perennial Border



Plan for a Border 5 feet wide and 20 feet long

FOR an abundance of color through the summer months, perennials are an indispensable part of the home garden, as well as a convenient source of cut flowers for indoor decoration. By planning your border in advance you can arrange perennials to make a pleasing picture. (The sketch above is a suggestion for grouping plants in irregular masses and may well serve as a guide for planning a border of any size.)

The plants we have selected in the three groups listed below were chosen for their free-flowering habit, their hardiness and their vigor. Although the sketch above provides for a border 5 feet wide and 20 feet long, it can easily be adapted to accommodate whatever space is available in your garden.

SEVENTY-FIVE BORDER PERENNIALS

Any One of the Three Groups (75 Plants) for \$22.50, Postpaid

| Group 5S-3—75 Plants | | Group 5S-3A—75 Plants | | Group 5S-3B—75 Plants | |
|----------------------|---|-----------------------|--|-----------------------|---|
| Key | For Sunny Locations No. of Plants | Key | For Partly Shaded Locations No. of Plants | Key | For Shaded Locations No. of Plants |
| 1 | Chrysanthemum, Tiffany Rose 3 | 1 | Chrysanthemum, Kristina 3 | 1 | Tradescantia, Blue Stone 3 |
| 2 | Phlox, San Antonio 3 | 2 | Hemerocallis, Hyperion 3 | 2 | Thalictrum, Lavender Mist 3 |
| 3 | Lythrum, Morden's Pink 5 | 3 | Lythrum, Dropmore Purple 3 | 3 | Astilbe, Diamond, White 3 |
| 4 | Aster, Harrington's Pink 3 | 4 | Aster, Harrington's Pink 3 | 4 | Hemerocallis, Mikado 3 |
| 5 | Chrysanthemum, Charles Nye 3 | 5 | Anemone, Marie Manchar 6 | 5 | Anemone, September Queen 6 |
| 6 | Delphinium, Belladonna 5 | 6 | Delphinium, Belladonna 6 | 6 | Tradescantia, Pauline 3 |
| 7 | Chrysanthemum, Meditation 3 | 7 | Chrysanthemum, Apricot Glow 3 | 7 | Cimicifuga racemosa 3 |
| 8 | Shasta Daisy, Majestic 3 | 8 | Shasta Daisy, Full Proof 3 | 8 | Anemone hupehensis 6 |
| 9 | Pyrethrum, Mixed 7 | 9 | Pyrethrum, Mixed 6 | 9 | Funkia cœrulea 3 |
| 10 | Phlox, E. I. Farrington 3 | 10 | Phlox, E. I. Farrington 3 | 10 | Hemerocallis, Goldeni 3 |
| 11 | Penstemon, Rose Elf 3 | 11 | Aquilegia, Mrs. Scott Elliott's Strain 3 | 11 | Tradescantia, Purple Dome 3 |
| 12 | Phlox, Miss Lingard 3 | 12 | Phlox, Miss Lingard 6 | 12 | Funkia subcordata alba 3 |
| 13 | Heliopsis, Summer Gold 3 | 13 | Geum, Princess Juliana 3 | 13 | Trollius Hybrids 3 |
| 14 | Phlox, Count Zeppelin 3 | 14 | Phlox, Border Queen 3 | 14 | Astilbe, Fanal 3 |
| 15 | Anthemis, Moonlight 5 | 15 | Chrysanthemum, September Gold 3 | 15 | Primula, Munstead Giants, Mixed 6 |
| 16 | Veronica, Blue Spire 3 | 16 | Liatris spicata 3 | 16 | Anchusa myosotidiflora 3 |
| 17 | Iberis sempervirens 5 | 17 | Iris sibirica, Snow Queen 3 | 17 | Iris sibirica, Snow Queen 3 |
| 18 | Stokesia, Blue Moon 3 | 18 | Stokesia, Blue Moon 3 | 18 | Epimedium, Yellow 3 |
| 19 | Dianthus, Bobby 6 | 19 | Veronica, Blue Peter 3 | 19 | Spiraea simplicifolia rosea 9 |
| 20 | Gypsophila, Rosy Veil 3 | 20 | Polemonium, Blue Pearl 6 | 20 | Hemerocallis minor 3 |

IT IS EASY TO ORDER BY MAIL FROM CARROLL GARDENS

With this catalog you have received an order blank and an addressed envelope for your convenience in making out your order. Always print your name and address clearly, and list the name and price of all items wanted. We ship to every state and have received many favorable comments on our method of packing and the fine condition in which the plants arrive.



FALL ASTER, Lavender Giant
Among the finest. See page 7

ACHILLEA (Yarrow)

Easily grown in full sun in ordinary garden soil.

‡**Filipendulina, Golden Plate.** (Nov-
elty.) 3 ft. Large heads of bright yellow
blooms on sturdy stems. Ideal for cut
flowers. Grows easily in any soil and
blooms during June and July. 75c each;
3 for \$1.75.

‡**Ptarmica, Perry's White.** 18 in. Clusters
of double pure white flowers. A favorite
for cutting all summer long, and a good filler
plant. June to August.

*‡**Taggetea.** 12 to 15 in. Silvery foliage.
Lovely pale yellow flowers. May, June.
65c each; 3 for \$1.65.

***Tomentosa.** 6 in. Yellow flowers. May,
June.

ACONITUM (Monkshood)

Picturesque plants for shady gardens, pre-
ferring rich, moist soil. They will also do well
in full sun or partial shade.

‡**Bicolor.** 3 ft. A rare form with blue and
white flowers; of easy culture. Early fall.
3 for \$2.00; 6 for \$3.75.

‡**Fischeri.** 2 to 3 ft. Loose heads of dark
blue flowers. September. 3 for \$1.50;
6 for \$2.75.

‡**Napellus, Sparks' Variety.** 4 ft. Violet-
blue. July, August. 3 for \$1.75; 6 for \$3.25.

‡**Wilsoni.** 4 to 5 ft. Attractive foliage and
rich deep blue flowers. October. 3 for \$1.75;
6 for \$3.25; 12 for \$6.00.

AETHIONEMA. See page 2.

AJUGA (Bugle)

Choose a sunny or partly shaded location in
average garden soil.

***Genevensis, Rosy Spire.** 6 in. Pink flowers.
May, June.

***Reptans.** 6 in. Familiar kind with blue flow-
ers. An ideal plant for ground-cover under
trees and other shady places. May.

***Reptans rubra.** 6 in. Attractive bronze
foliage and blue flowers. May.

CARROLL GARDENS

New and Better Perennial Plants

‡ indicates varieties suitable for cutting

* indicates varieties suitable for rock
gardens or low borders

3 of any one variety for \$1.25;

6 of any one variety for \$2.25;

12 of any one variety for \$4.25;

55c each, except where noted

AQUILEGIA (Columbine)

Columbines are "must" plants for every garden,
however small. They adapt themselves easily and
often self-sow, to the delight of most gardeners.
Few plants are more graceful in form and the
blooms are delightful for cutting. Plant in sun or
light shade in average soil.

‡**Cærulea.** 2 ft. The famous Rocky Mountain blue
Columbine.

***Canadensis.** 18 in. A native kind with reddish
orange flowers. May, June.

‡**Chrysantha.** 2½ ft. Choice long-spurred yellow
flowers.

‡**Chrysantha, Silver Queen.** Pure white.

‡**Crimson Star.** Large flowers with crimson sepals
and spurs accentuated with white petals.



ARMERIA, Bees' Ruby. See page 7



ANEMONE japonica. See page 7

Aquilegia (Columbine), continued

‡**Longissima.** 18 in. A native kind. Pale yel-
low with amazingly long spurs.

‡**Mrs. Scott Elliott's Strain.** Outstanding
for its wide range of color. We offer these
long-spurred Columbines with justifiable
pride.

‡**Rose Queen.** Long-spurred pink flowers.

SPECIAL OFFER

7 large plants of Long-spurred Columbines
in mixed colors for \$2.00

ALLIUM

***Tibeticum.** 1 ft. The globular lilac flowers
bring a welcome spot of color to the rock
garden in summer. Does well in ordinary
soil in sun or partial shade. July, August.

ALYSSUM

Plant in a well-drained, sunny location in
average soil.

***Saxatile compactum** (Basket of Gold). 12
in. Combines well with many plants in the
rock or wall garden or perennial border. See
color illustration on page 2.

***Saxatile citrinum.** A pale yellow form of
the above.

ANCHUSA

Myosotidiflora. 15 in. The flowers resemble
forget-me-nots but come earlier in spring
and are a deeper shade of blue. When the
blooming season is past, the somewhat
rough, heart-shaped leaves make a shady
ground-cover. Does best in full or part
shade.

‡**Italica, Dropmore.** 4 to 5 ft. Gentian-blue
flowers in May and June. Useful as a cut
flower. Prefers full sun.

ARTEMISIA

Prefers a sunny spot in well-drained, ordi-
nary soil.

***Schmidtiana nana.** A little foliage plant
that forms a very fine, silvery ground car-
pet. Plant in a sunny, well-drained spot.
Good in the rock garden.

‡**Silver King.** 2 ft. Handsome silvery foliage.
Excellent for mixed bouquets and may
also be dried for winter decoration.

Hardy Carnations and Dianthus (Fragrant Pinks)

For a source of fragrance in your garden, few plants, if any, are equal to the various kinds of Hardy Carnations and Pinks. Most of them are also useful for cut flowers in the home. The main requirement is full sunlight and well-drained soil. Another thing that is really important is that the soil be well drained and somewhat light in nature. Avoid putting too much manure or fertilizer in it. Practically all Carnation Pinks are more or less lime loving; if your soil has a tendency to be slightly acid, it is advisable that some lime be added and mixed thoroughly into it. By selecting from the varieties shown on this page, which represent one of the finest collections in the country, you can have Pinks and Carnations in bloom from spring to fall in your perennial garden or rock garden. So much crossing and recrossing of the old-fashioned Carnation with Pinks or Dianthus has been done lately that it is getting pretty difficult to determine which may be called Pinks and which Carnations; therefore, we have combined all of them.



Dianthus: Cheerfulness, Salmon Unique, Serena, Lucia, Wallace Red

Two New Border Pinks or Carnations

Both these varieties have double flowers at least 2 inches across, growing 12 to 15 inches high. These are excellent cut flowers; they grow fast and bloom almost continuously all summer.

Evangeline. Spicy fragrance. Three or four double flowers of soft Persian rose on a stem.

Dinah. Deep Persian rose with maroon center. Spicy fragrance.

Either of the above, 75c each; any 3 for \$2.00; any 6 for \$3.75; 12 for \$7.00

New Hardy Carnations (Hybrid Pinks)

Any 3 for \$1.50; any 6 for \$2.75; any 12 for \$4.75

CHEERFULNESS. Bushy, compact, habit. The large, semi-double flowers are white and crimson, on wiry, 12 to 15-inch stems. Blooms freely in June and a little more throughout the summer.

LUCIA. 15 to 18 in. Beautiful bright salmon-scarlet, full double flower. A sturdy grower. Blooms all summer.

SALMON UNIQUE. Large, double, salmon-colored blooms on sturdy, 12 to 15-inch stems.

SERENA. A very free bloomer. The large, double flowers are ivory-white. Very fragrant.

WALLACE RED. Semi-double, brilliant crimson-red flowers on 8 to 12-inch stems. Blooms all summer; sturdy, compact growth.

Offer No. 5S-4: 5 plants, 1 each of the 5 shown here.....\$2.25

Offer No. 5S-4A: 15 plants, 3 of each....\$5.50

← Presenting Sweet Memory

A lovely new perennial Carnation, pure white with crimson-maroon spots in the center. It is perfectly hardy and has large, double, sweet-scented, 2-inch flowers on sturdy stems 8 to 12 inches high. Growth is compact and tight, forming a cushion-like plant. It blooms in late May and June, and intermittently all summer. Does well in any garden soil that is well drained and in practically full sun. Sturdy, potted plants. 75c each; 3 for \$2.00; 6 for \$3.75; 12 for \$7.00; 25 for \$13.50.

P.S. Sweet Memory's compact and bushy growth, and evergreen foliage the year round makes it excellent for hedging and bordering flower beds.

3 of any one variety for \$1.25; 6 for \$2.25; 12 for \$4.25; 55c each, except where noted

Beatrix. 12 in. Double salmon-pink flowers in clusters. May, June.

***Bobby.** A Carroll Gardens introduction of several years ago and still the finest single-flowered Dianthus. Clear deep rose with a crimson ring in the center. Bushy and compact growth covered with blooms on 8 to 12-inch stems. May and June, and occasional flowers all summer. See color illustration on page 2.

*†**Bristol Purity.** 1 ft. Double white flowers.

†**Crimson King.** 15 in. Red. All summer.

***Deltoides, Brilliant.** 4 to 6 in. Small, brilliant red flowers and grassy foliage. Very distinct; excellent for the rock garden or low border. May, June.

*†**Dubonnet.** 10 to 12 in. Very attractive, double, glowing deep crimson-purple flowers. Neat, compact plant. 3 for \$1.50; 6 for \$2.75.

***Little Joe.** 6 in. Large, single, crimson blooms; delightful companion for Bobby.

†**Meg Gardner.** 15 in. Large, single, white flowers with distinct red centers. June, July.

***Mrs. Dina Weller.** 6 in. A new little Dianthus of very compact growth, covered with single, lavender-pink flowers with much deeper ring in the center. Late May and June. Ideal for the small rock garden or border.

*†**Pink Princess.** 1 ft. Carnation-like, double, salmon-pink flowers; "Old Spice" fragrance. Blooms freely in June and through the summer. 3 for \$1.65; 12 for \$5.50; 65c each.

†**Sylvia.** Large, double flowers of pale rose-pink edged with silvery white, gradually deepening to rich salmon. 3 for \$1.50; 6 for \$2.75.

***Tiny Rubies.** The miniature plants produce tiny double, carnation-like flowers on stems 4 to 5 inches high. Rose-pink.

*†**White Reserve.** 16 in. Another top-notch double white with Carnation-like flowers. June, July.

DIANTHUS BARBATUS (Sweet William)

- †**Newport Pink.** Lovely salmon-pink.
- †**Scarlet Beauty.** Beautiful scarlet shade.
- †**White.**
- †**Mixed Hybrids.** Many shades.

†**Hardy Border, Mixed.** Delightful collection in a wide variety of colors, both single and double.

SPECIAL—Mixed Border Carnations. 5 for \$1.00; 12 for \$2.00

CARROLL GARDENS NEW AND BETTER PERENNIAL
AND ROCK PLANTS, continued

ANEMONE (Windflower)
Spring-Flowering

***Pulsatilla**. Pasqueflower. 10 to 12 in. Violet-blue flowers are followed by silky seedpods. A picturesque and curious plant. Sold out for this season.

Bulbous Anemones

Plant about 6 inches deep in a cool, moist but well-drained soil. Early spring planting is best in the North; fall planting in the South. Cover in winter with straw manure.

*†**Apennina**. 6 in. Single; bright blue. Fine for the rock garden and shady border. Naturalizes nicely in open woods or under shrubs.

*†**Apennina alba**. Pure white.

†**Blue Poppy**. Large, single blue flowers on long stems.

†**De Caen**. Many fine shades of blue, white and scarlet.

†**His Excellency**. 1 ft. Vivid velvety vermilion with silvery white base and blue-black center.

†**St. Brigid**. A florists' favorite. Large flowers in a wide range of rich colors.

†**White Poppy**. Large, single white blooms on long stems.

Any of the above, 12 for 75c; 25 for \$1.35; \$4.50 per 100

Fall-Flowering Kinds (Anemone japonica)

Beautiful fall-flowering plants. They begin blooming in early September and last until freezing weather cuts them down. Plant in rich, moist soil, partial shade or full sun. A good covering of leaves over winter is advisable.

†**Alba**. Large, single flowers of purest white on splendid 4-foot plants.

†**Alice**. 2 to 3 ft. Pale silvery rose-pink; very large.

†**Hupehensis**. 2 ft. Shades of rose-pink; satiny petals.

An ideal plant for the foreground of the perennial border. Foliage is soft and downy. Grows best in partial shade, in a rich but well-drained soil. August, September.

†**Marie Manchart**. Three-foot plants bearing semi-double blooms of clean white.

†**September Charm**. A recent hybrid, from 2 to 2½ feet tall. It has lovely single silvery rose flowers.

†**September Queen**. 2 ft. The rosy-red flowers are semi-double and are freely produced.

*†**September Sprite**. 12 in. A charming pink variety of diminutive form. Outstanding for a moist place in the rock garden and border.

Any of the above, 3 for \$1.25; 6 for \$2.25; 12 for \$4.25; 55c each

Fall Anemone Collection

of the 5 varieties illustrated on page 5

Alba **Alice** **Marie Manchart**
September Charm **September Queen**

OFFER No. 5S-5: 5 plants, 1 each of the 5 listed above, \$2.00

OFFER No. 5S-5A: 15 plants, 3 of each, \$5.00



ASTILBE

For that shady, moist spot in your garden. See page 8

ANTHEMIS (Golden Marguerite)

These rampant-growing perennials produce an abundance of cut flowers. They require little care and make a brilliant showing. Ideal in the foreground of shrub plantings. Ordinary, well-drained soil and full sun is best.

†**Golden Dawn**. A new variety with fully double flowers of clear golden yellow, unaffected by sun or bad weather. Fine for cutting. Blooms all summer. 3 for \$1.75; 12 for \$5.00.

†**Moonlight**. 18 to 24 in. Large, single, daisy-like flowers of attractive pale yellow. Late May to July.

ARMERIA (Thrift)

Fine plants for the rock garden or perennial border. Plant in full sun in average garden soil.

*†**Bees' Ruby**. Large, ruby-red flowers on stiff, wiry stems 18 inches tall. Makes a brilliant show in June and July. 3 for \$1.50; 6 for \$2.75; 60c each.

***Cæspitosa Hybrids**. Large flower-heads in a pleasing variety of pink shades.

***Cephalotes rubra**. 1 ft. Deep pink; very showy. June and occasionally through the summer.

ASCLEPIAS (Butterfly-Weed)

†**Tuberosa**. 2 ft. Brilliant orange flowers; a favorite for wild gardens as well as perennial borders. A showy native plant doing well in ordinary soil, in sun or partial shade. June, July.



GYPSOPHILA, Rosy Veil. See page 9

HARDY ASTERS

For a brilliant mass of color in the early fall garden, as well as for cut flowers for the home, very few plants equal the Hardy Asters. They are easily grown in full sun in any good average garden soil. The fall-blooming varieties are benefited if they are divided and replanted every other year.

Aster Frikarti. See back cover.

Alpellus, Triumph. 8 in. A lovely new Hardy Aster, a cross between *Alpinus* and *Amellus*, covered with sparkling blue daisies during June and July. 3 for \$1.50; 6 for \$2.75; 12 for \$4.75.

Novelty Fall Asters

Little Red Boy. A very compact plant 15 to 18 inches high, giving a mass of colorful red flowers in September.

†**Peace**. Large, semi-double, rosy lavender flowers on sturdy, 3-foot plants. A very fine novelty. 75c each; 3 for \$2.00.

†**Plenty**. 3 to 4 ft. The flowers are lovely soft blue and almost as large as *Aster Frikarti*. An outstanding novelty for your fall garden. 75c each; 3 for \$2.00; 6 for \$3.50.

Princess Margaret Rose. A stiff and bushy plant 18 inches high. A mass of rose-colored flowers in September.

†**Prosperity**. A new pink Aster, producing masses of flowers on sturdy, 3 to 4-foot plants. September, October. 75c each; 3 for \$2.00; 6 for \$3.50.

3 Novelty Asters

Peace **Plenty** **Prosperity**
OFFER No. 5S-6: 3 plants, 1 each of the 3 varieties, \$2.00



DELPHINIUM, Belladonna Improved
The easiest variety to grow.
See page 8

Popular Fall Asters

Beechwood Challenger. 3 ft. Masses of glowing crimson flowers. We consider this to be the finest red Aster.

†**Harrington's Pink**. 4 ft. Flowers are perfectly flat, 1½ inches or more across, of clear soft pink, with not a hint of magenta.

†**Lavender Giant**. A new introduction of our own. Large, lavender-blue flowers completely cover the 3-foot plants in graceful sprays. Early September to late October.

†**Mt. Everest**. 4 ft. Pyramidal plants bearing snowy white flowers with yellow eyes.

†**Violetta**. 4 ft. New. The darkest Aster. Lovely flowers of deep violet-purple. Sturdy plants.

Any of the above Asters, 3 for \$1.25; 6 for \$2.25; 12 for \$4.25, except where noted

THE POPULAR HARDY
FALL ASTER COLLECTION

Violetta. Deep blue.
Lavender Giant. Light blue.
Mt. Everest. White.
Beechwood Challenger. Red.
Harrington's Pink.

OFFER No. 5S-7: One each of the 5 for \$2.50
OFFER No. 5S-7A: 3 of each for \$5.75.



EUPATORIUM coelestinum
(Hardy Ageratum)

Produces showy heads of misty bluish purple flowers in late summer, fine for cutting. Easy to grow in full sun.

ASTILBE

Astilbes are ideal, colorful perennials for shaded locations in the garden. They also do well in the sun. They prefer rather rich, moisture-retaining soil; watering is essential during dry weather. Plants bloom freely in June and July and the foliage remains attractive for the rest of the summer. Height about 2 ft. See color illustration on page 7.

- †**America.** Lilac-rose.
- †**Fanal.** Glowing dark garnet-red.
- †**Gladstone.** White.
- †**Gloria superba.** Deep rose-pink.
- †**Peachblossom.** Peachblossom-pink.
- †**Rhineland.** Bright crimson.
- *†**Simplicifolia rosea.** A dwarf species with pink flowers in June and July. Suitable for the shady rock garden or border.

Any of above varieties, 3 for \$2.00; 6 for \$3.75; 12 for \$6.75; 75c each

BAPTISIA (False Indigo)

Australis. 3 ft. Deep blue flowers; pleasing foliage. Plant in average soil, in sun or light shade. June.

CAMPANULA (Bellflower)

In your rock garden or perennial planting, or in the foreground of your shrub border, Campanulas can be used to good advantage. They provide bright spots of color, and the hardy plants can be depended upon to increase in size each year.

- ***Carpatica.** See color illustration on page 2.
- †**Medium.** Canterbury Bells. 2 ft. Mixed or separate colors—white, pink, and blue.
- †**Medium calycanthema.** Cup-and-Saucer Canterbury Bells. Mixed, or white, pink, and blue.
- †**Persicifolia.** 2½ ft. Delightful blue flowers are borne on spire-like stems. June, July.
- †**Persicifolia, Misty Morn.** Beautiful double blue variety. 3 for \$1.65; 65c each.

CHIVES. See page 14.

CHRYSANTHEMUM. See pages 32 to 39.

CARROLL GARDENS NEW AND BETTER PERENNIAL AND ROCK PLANTS, continued

† indicates varieties suitable for cutting

* indicates varieties suitable for rock gardens or low borders

3 of any one variety for \$1.25; 6 of any one variety for \$2.25; 12 of any one variety for \$4.25; 55c each, except where noted

CATANANCHE (Cupid's-Dart)

†**Cerulea major.** 15 in. Delightful bright blue flowers appear freely from June to late August. Ordinary soil and sun or part shade suits it.

COREOPSIS (Tickseed)

Grows in ordinary soil, in sun or part shade.

***Auriculata nana.** 15 in. A dainty species with clusters of golden yellow flowers. May to September.

†**Baden Gold.** New. Extremely large flowers on stiff, wiry stems 18 to 24 inches tall. Pleasing golden yellow. Late May to July. 3 for \$1.50; 6 for \$2.75; 60c each.

†**Golden Shower.** 18 to 24 in. Very free blooming throughout the summer. Delicate star-like, brilliant yellow blossoms. Graceful foliage.

†**Perry's Double.** 2½ ft. Semi-double. Free-flowering habit. June, July.

DAHLIA, Dwarf Summer. See page 19.

CENTAUREA (Perennial Cornflower)

Plant in sun or light shade in average soil.

Dealbata Steenbergi. 18 to 24 in. A splendid novelty with purplish red flowers with white center. Truly close to orchid color. 3 for \$2.00; 6 for \$3.75; 75c each.

Montana. 18 in. Brilliant deep blue flowers in late spring and early summer.

CORONILLA

***Cappadocica.** 6 in. The glaucous foliage makes a compact mat; brilliant golden yellow flowers in great abundance. Fine in the rock garden, in average soil and full sun. May to July.

DICENTRA (Bleeding-Heart)

Plant in ordinary soil, in sun or partial shade.

***Eximia.** See color illustration on page 2.

***Formosa, Sweetheart.** A new and rare white form. The flowers are pure white and the plant makes bushy growth 12 inches high. Blooms freely from spring to fall. An ideal plant for shade and also does well in sunny places provided the soil does not become too dry during the summer. 3 for \$2.50; 6 for \$4.75; 95c each.

†**Spectabilis.** The old-fashioned Bleeding-Heart that everybody loves. Heart-shaped, pink flowers in long racemes. 3 for \$2.00; 6 for \$3.75; 12 for \$7.00; 85c each.

DELPHINIUM

Delphiniums are among the most stately and impressive of all perennials. They produce handsome spikes of gorgeously colored blooms that make a wonderful display in the border and are also fine for cutting. They should be planted in masses at the rear of the hardy border. Well-drained, average garden soil and full sun meet their requirements. Avoid using manure as fertilizer unless it is very well rotted.

†**Belladonna Improved.** 3 to 4 ft. Light blue. See color illustration on page 7.

†**Chinensis, Tom Thumb.** 15 in. Dwarf. Several crops of exquisite blue flowers.

†**Lamartine.** 3 to 4 ft. Large, single, dark gentian-blue flowers on branching plants.

†**New Giant Pacific Hybrids, Mixed Shades.** Favorites for the rear of the hardy border.



GEUM, Fire Opal
A most brilliant color. See page 9.

CIMICIFUGA (Bugbane)

Plant in large groups in fairly rich, rather moist soil, in the shade. A display of white spire-like flowers from July to October.

†**Davurica.** 3 to 4 ft. Very fine small spikes in much-branched panicles. July. 3 for \$1.65; 6 for \$3.00; 65c each.

†**Japonica (acerina).** 2 to 3 ft. A late-flowering species of free-blooming habit. August and September.

†**Racemosa.** A popular native plant with 3 to 5-foot spikes of white flowers. Late June, July.

†**Racemosa simplex.** A showy fall-blooming variety. White spikes 3 to 4 feet long. Late September and October. 3 for \$2.00; 75c each.

†**Simplex, Armeleuchter.** A form of the above with larger individual flowers. 3 for \$2.00; 75c each.



LILY-OF-THE-VALLEY
Fine for shady spots. See page 11.

DICTAMNUS (Gas-Plant)

Likes average soil and either full sun or part shade.

Albus. A hardy plant that will grow and remain in the garden for many years; best left undisturbed, as it improves with age. June, July. 3 for \$1.50; 6 for \$2.75.

Ruber. A red-flowering form of the above. 3 for \$1.50; 6 for \$2.75.

DIGITALIS (Foxglove)

Very popular plants for the perennial border, bearing giant spikes of bloom. Plant in a sunny location in ordinary soil.

‡**Ambigua.** 2½ ft. A true perennial Foxglove with yellow flowers. June, July.

‡**Giant Shirley, Mixed.** Biennial. Fine selection of mixed colors.

ECHINOPS. See back cover.

EPIMEDIUM (Barrenwort)

These are fine low-growing plants for full or part shade, for they are of easy culture and perfectly hardy. The attractive leathery green foliage turns bronzy red in the fall, which is an added advantage. The dainty flowers are produced in great profusion in early spring. Plant Epimedium in rather rich, moist soil in the rock garden, the hardy border or use it as a ground-cover. See color illustration on page 2.

***Alpinum rubrum.** Red with white spurs.

***Lilacina.** Lilac-rose.

***Macranthum niveum.** Lovely white.

***Macranthum, Rose Queen.** Pink.

***Pinnatum elegans.** Golden yellow.

***Sulphureum.** Pale yellow.

Any of these six outstanding varieties, 3 for \$1.50; 6 for \$2.75; 12 for \$4.75

FUNKIA (Hosta)

Indispensable plants for gardens, the Funkias grow well in sun or shade. Their blooms are like small clustered lilies and their foliage has a rich and enduring quality which is very decorative for ground-cover use. Especially recommended for shade.

Cerulea. Deep blue flowers on 3-foot stalks. Shiny dark leaves 18 inches long. July.

Glauca. The large leaves have a pleasing blue-gray cast; spikes of pale blue flowers. July, August. 3 for \$2.00; 75c each.

Lancifolia. 2 ft. Glossy narrow foliage; lilac-blue flowers. August.

Minor alba. 1 ft. A rare form of dwarf habit. White flowers on 1-foot stalks in midsummer. 3 for \$2.00; 75c each.

Subcordata grandiflora alba. The old-fashioned August Lily; one of the most permanent of perennials. Makes a delightful shady border. 3 for \$2.00; 6 for \$3.75.

Undulata variegata. 2 ft. A form with variegated foliage; blue flowers in July.



HELIOPSIS, Summer Gold
Blooms all summer.

GEUM

Colorful hardy perennials blooming freely in June and July, preferring good rich soil in a sunny or lightly shaded location.

Fire Opal. 18 to 24 in. Orange-scarlet. See color illustration on page 8. 3 for \$1.50; 6 for \$2.75; 60c each.

Princess Juliana. 18 to 24 in. Bright orange. 3 for \$1.50; 6 for \$2.75; 60c each.

Wilton Ruby. 18 to 24 in. Ruby-red. 3 for \$1.50; 60c each.

Two Outstanding New Geums

Borisi. 10 to 12 in. Bright scarlet flowers in May and June. Excellent for rock garden and border.

Bulgaricum. Lovely buttercup-yellow flowers with orange cast, on 8 to 10-inch stems. Late May to July.

Either of the above, 75c each, 3 for \$2.00



CHRISTMAS ROSE (Helleborus niger)
Rare and interesting. See page 10

GAILLARDIA

‡**Giant-flowered Hybrids.** 15 in. A very fine strain with extra-large flowers in various colors. Plant in ordinary soil, in sun or light shade. Blooms all summer. 3 for \$1.00; 6 for \$1.75; 12 for \$3.00.

GERANIUM (Cranesbill)

Average, well-drained soil and a sunny location are needed.

***Alpinum.** 10 in. Lovely deep blue flowers nearly all summer.

***Lancastriense.** 6 in. Light salmon-pink blooms borne frequently all summer on 4 to 6-inch stems. Unusually hardy; a choice rock-garden plant. Easily grown.

GYPSOPHILA (Babys-Breath)

All Gypsophilas prefer a sunny, well-drained, rather dry location. Mix a little lime in the soil.

‡**Bristol Fairy.** 3 ft. The popular double-flowered variety so much used in mixed bouquets. June, July.

***Fratensis.** 8 in. Glaucous foliage and light pink flowers. May to July.

‡**Oldhamiana.** 3 ft. A pale pink, this hybrid extends the season considerably. July to late September.

‡**Oldhamiana, Flamingo.** A new tall, double form. The lovely pale pink flowers are like Bristol Fairy in form and it grows just as tall but blooms four or five weeks later. 3 for \$2.00; 12 for \$7.50; 75c each.

‡**Repens Bodgeri.** 18 in. Earlier than Bristol Fairy, the white flowers are tinted pink. Compact in habit.

*‡**Rosy Veil.** 15 in. Double, soft pink flowers all summer. Fine for a low border or a sunny spot in the rock garden. See color illustration on page 7.



**LIATRIS,
September Glory**

Spire-like Perennial for late Summer bloom. See page 11.

All-Season Babys-Breath Collection

Four outstanding varieties to give bloom from early June till fall. Two tall and two low growing:

Repens Bodgeri

Rosy Veil

Flamingo

Bristol Fairy

OFFER No. 5S-8: 4 plants, 1 each of the 4 varieties, \$2.50

OFFER No. 5S-8A: 8 plants, 2 of each, \$4.50

HELIOPSIS

Also known as Hardy Zinnias. Indispensable plants growing about 3 feet high and blooming continuously all summer. They grow easily in any average soil and make excellent cut flowers.

‡**Immens.** Flowers double, rich chrome-yellow. 3 for \$2.00; 6 for \$3.75; 75c each.

‡**Imbricata.** 3 ft. A rare, fully double-flowered, golden yellow variety. Very showy and a fine cut flower. June to September. 3 for \$2.00; 6 for \$3.75; 75c each.

‡**Incomparabilis, Summer Gold.** 3 ft. Semi-double, golden flowers. Withstands heat and drought and blooms freely all summer. 3 for \$1.50; 6 for \$2.75; 12 for \$5.00.

‡**Patula.** A beautiful sort, nearly orange-yellow in color, with three rows of pointed, incised petals. Large, flat flowers. 3 for \$2.00; 6 for \$3.75; 75c each.

CARROLL GARDENS NEW AND BETTER PERENNIAL AND ROCK PLANTS, continued

‡ indicates varieties suitable for cutting

* indicates varieties suitable for rock gardens or low borders

3 of any one variety for \$1.25; 6 of any one variety for \$2.25; 12 of any one variety for \$4.25; 55c each, except where noted

HELENIUM (Sneezewort)

Plant in average garden soil, in sun or light shade. For best results divide the plants early every spring, replant the young shoots and discard the old plant.

‡**Moerheim Beauty.** 2½ ft. A handsome and distinctive perennial with warm, glowing brown-red flowers from June to October. 3 for \$1.65; 12 for \$5.50; 65c each.

‡**Pumilum magnificum.** 18 to 24 in. Bright yellow flowers all summer. A good companion for Moerheim Beauty.

‡**The Bishop.** 2 ft. Large, rich buttercup-yellow flowers with dark center. Blooms all summer. 3 for \$1.65; 65c each.

HELIANTHEMUM (Sun-Rose)

These delightful low-spreading plants are indispensable in the rock garden and foreground of the hardy border. They prefer a sunny, well-drained location. Height is 8 to 10 inches and blooming season from late May to July. See color illustration on page 2.

***Apricot.** Apricot-yellow. One of the best.

***Ben Ledi.** A new hybrid. Crimson-lake.

***Buttercup.** Single; golden yellow.

***Double Yellow.** Double; citron-yellow.

***Fireball.** Double; bright scarlet.

***Rhodanthum carneum.** Pale pink flowers on silvery foliage are a pleasing combination.

HELIANTHUS (Perennial Sunflower)

‡**Loddon Gold.** 4 to 5 ft. A rather coarse perennial with large, dahlia-like flowers of rich yellow. Fine for cutting. Plant in full sun in good garden soil. August to October.

HIBISCUS (Rose-Mallow)

The 5-foot, shrub-like plants are particularly spectacular, with an abundance of large, single, hollyhock-shaped flowers, measuring 4 to 6 inches across in late summer. Prefers ordinary soil and a location in either sun or part shade.

Mixed Colors only.



MADONNA LILY, Cascade Strain. The sensational new development in Madonna Lilies. Disease free. See page 27.

HELLEBORUS (Christmas Rose)

Prefer rich loose soil and partial shade.

Niger. This hardy perennial attracts great interest wherever it is grown, because of its lovely single white flowers and its unique blooming season—December to March. The flowers are flushed with pink and are borne on sturdy stems. See color illustration on page 9. 3 for \$3.25; 6 for \$6.25.

Orientalis atropurpurea. A new red Lenten Rose producing crimson-purple flowers from February to April. Numerous blooms on 12 to 15-inch stems. 3 for \$3.25; 6 for \$5.50; \$1.25 each.

HEUCHERA (Coral-Bells)

Light soil and full sun suit them best, but they will make an admirable show in partial shade. Blooming season from late May through July. Ideal for border and rock garden.

*‡**Brizoides.** 18 to 24 in. Vigorous grower; light pink flowers.

*‡**Queen of Hearts.** The best of the dark red varieties. 3 for \$2.00; 75c each.

*‡**Rosamondi.** 18 in. Coral-pink.

*‡**Sanguinea.** 15 to 18 in. A popular red variety.

*‡**Snowflake.** 15 to 18 in. Outstanding white. 3 for \$2.00; 75c each.

IBERIS (Candytuft)

Likes well-drained, average soil and a sunny location.

***Purity (Cistus).** A hardy Candytuft of merit. The large, attractive flowers are pure white.

Very free bloomer and compact grower only 6 inches high. Comes into bloom in late April and May. Truly a gem for the rock garden and an excellent low border plant for edging. 3 for \$2.00; 6 for \$3.75; 12 for \$7.00.

***Sempervirens.** See color illustration on page 2.

***Snowflake.** 10 in. Large, pure white flowers on dwarf plants. The best variety for foliage effect as an evergreen edging plant.

HOLLYHOCK (Althea rosea)

Plant in a sunny place in average garden soil.

Double Pink, White, Red, Yellow, and Mixed.

HOSTA. See Funkia.

IRIS. A complete list of all types for late summer and fall delivery will be featured in our Fall 1950 Catalog, or refer to our Fall 1949 issue.

LATHYRUS

Plant in ordinary garden soil, in sun or light shade.

‡**Latifolia.** Often referred to as the Hardy Perennial Sweet Pea. Excellent to plant on banks and to train on fences as summer vines. Once started, they will live for many years. They bloom freely in summer; excellent for cutting.

SPECIAL. Pink, Red, White, and Mixed. 3 for \$1.00; 6 for \$1.50; 12 for \$2.50.

LINUM (Perennial Flax)

Plant in a sunny spot in average soil.

***Alpinum.** 15 in. Dwarf; brilliant sky-blue flowers nearly all summer.

***Flavum.** 12 in. Golden yellow. May to July.



MONARDA, Croftway Pink
Fragrant and beautiful. See page 11.



LYTHRUM, Morden's Pink

Very hardy and free-blooming. Don't miss the new Dropmore Purple. See page 11.



PYRETHRUM, Rose Mist.

A most outstanding new Painted Daisy. See page 16.

LAVANDULA (Sweet Lavender)

The true Sweet Lavender is an excellent garden plant with evergreen foliage that adds to its usefulness. It blooms in summer, when color is most needed. Easily grown in full sun in ordinary soil.

Vera. 15 to 18 in. An herb garden is not complete without one of the forms of Lavender. This one has intensely fragrant foliage and flower spikes. When the center buds start to open, the flower spikes are gathered and then dried. When fully dry, sachets can be made and placed with linens, to which the Lavender imparts a clean, fresh scent.

Vera rosea. *New.* 12 to 15 in. Similar to above, but the blooms are a delicate silvery pink.

Vera, Twinkle Purple. 18 in. A definitely improved form of *L. vera*. Compact, well-formed plants with purple flowers.

Vera, Carroll Variety. 12 to 15 in. A new form of our own, of dwarf, compact growth. Masses of lavender-purple flowers on bushy plants. The silvery gray evergreen foliage remains attractive the year round. Excellent for edging or as groups or single specimens in the hardy border and rock garden. 65c each; 3 for \$1.65; 6 for \$3.00; 12 for \$5.50; \$40 per 100.

LOBELIA

Cardinalis. Cardinal-flower. 2 ft. A showy native plant with brilliant red flowers in July and August. Likes a rather rich, moist soil and either sun or light shade.

LYCHNIS

Does well in average soil, in sun or part shade.

‡**Chalcedonica plena.** Double, very brilliant scarlet blooms in clusters on 18 to 24-inch stems. Blooms freely in June. Sun or part shade. 3 for \$2.50; \$1.00 each.

*‡**Viscaria splendens fl.-pl.** 15 to 18 in. Double, rose-pink flowers. Excellent for border or rock garden.



SWEET LAVENDER

LUPINS

Russell Hybrids. 3½ ft. Flower spikes 2 feet long, representing practically every color in the rainbow. They like a partially shaded location of rich lime-free soil. Particularly recommended for cooler sections of the country. May to July.

LYTHRUM

A showy perennial blooming from early to late summer and lasting in the garden for many years. Few plants can equal its brilliant color and mass of blooms. Easy to grow in any average soil, in sun or partial shade. Perfectly hardy.

‡**Dropmore Purple.** A new hybrid. Showy deep pink-violet flower on 2½ to 3-foot, bushy plants. Blooms all summer. Dependable and hardy. 3 for \$1.65; 6 for \$3.00; 65c each.

‡**Morden's Pink.** 2 to 2½ ft. Masses of rose-pink flowers on narrow spikes. Grows in full sun or part shade. Fine for cutting. June to September. See color illustration on page 10. 3 for \$1.50; 6 for \$2.75; 12 for \$5.00; 65c each.

‡**Prolific.** *New.* 3 ft. Clear Persian rose. 3 for \$1.50; 6 for \$2.75; 12 for \$5.00.

LILY-OF-THE-VALLEY (Convallaria)

Everybody knows and loves the white Lily-of-the-Valley. Grow it in the shade. See color illustration on page 8. 6 for 90c; 12 for \$1.50; \$11.00 per 100.

MONARDA (Bergamot)

Easily grown in any average soil, although a moist location in sun or partial shade is preferable.

Two New Beauties

Croftway Pink. 3 ft. Numerous large, rich pink flowers from July to September. Foliage is very aromatic. See color illustration on page 10.

Sunset. 2 to 3 ft. A new color—brilliant deep maroon-crimson. Blooms in July and August.

Either of the above, 65c each; any 3 for \$1.65; any 6 for \$3.00



PRIMULA cachemiriana

A different Hardy Primrose. See page 16.

LIATRIS (Gayfeather)

This fine spire-like perennial blooms in midsummer. It is showy in the garden and excellent for cutting. Grows easily in common garden soil in full sun or part shade.

‡**Pycnostachya.** 4 ft. The tall spikes of rich purple are outstanding in the summer garden, July, August.

‡**September Glory.** 6 ft. Giant spikes of rosy purple flowers, making a splendid effect. September. See color illustration on page 9. 3 for \$1.50; 6 for \$2.75.

‡**Spicata.** 3 ft. Similar to *L. pycnostachya* but earlier to bloom.

‡**White Spire.** A sport of September Glory. Pure white. Fine for garden and cutting. 65c each.



PENSTEMON, Rose Elf

Plenty of flowers of a good color. See page 12.

CARROLL GARDENS NEW AND BETTER PERENNIAL AND ROCK PLANTS, continued

‡ indicates varieties suitable for cutting

* indicates varieties suitable for rock gardens or low borders

3 of any one variety for \$1.25; 6 of any one variety for \$2.25; 12 of any one variety for \$4.25; 55c each, except where noted



**RUDBECKIA
purpurea
The King**

Stately tall stems for the background of perennial borders, an excellent cut flower. See page 16.

PACHYSANDRA

Terminalis. Japanese Spurge. 10 in. The ideal evergreen ground-cover for shady places. 12 for \$1.75; \$14.00 per 100.

POTENTILLA

***Tonguei.** One of the finest wall or rock plants, in bloom continuously from June to frost. The long, trailing branches make a lovely display; orange-apricot blooms with an orange-red center. Plant in well-drained soil in full sun.

***Verna nana.** 2 to 4 in. Also sold under the name of *Cinerea* and *Matsumurae*. A very compact-growing plant covered with lovely golden yellow flowers in May and June.

PENSTEMON (Beard-Tongue)

Average soil and a well-drained, sunny location suits Penstemon.

‡**Firebird** (Cherry Glow). 2 ft. Adds color to summer gardens. The individual ruby-crimson blooms are unusually large and the long spikes of bloom are especially attractive in bouquets.

‡**Garnet.** 18 in. The graceful stems hold loosely arranged garnet blooms. June, September.

‡**Rose Elf.** 2 to 3 ft. A new hardy Penstemon producing masses of bloom in June and July. The color is a lovely coral-pink. Excellent for cutting and makes a spectacular show in the garden. See color illustration on page 11. 3 for \$1.65; 6 for \$3.00; 65c each.

‡**Ruby King.** Flower spikes are 18 to 24 inches high and are produced freely even the first year. Eight or ten spikes bubble over with rich ruby, trumpet-shaped flowers held above the bushy plants. 3 for \$2.25; 6 for \$4.25; 85c each.

PHYSOSTEGIA (False Dragonhead)

Plant in ordinary garden soil, in sun or part shade.

‡**Rosy Spire.** 3½ ft. Showy spikes of deep rosy crimson bloom. September.

‡**Summer Glow.** 4 ft. The striking spikes are often 18 inches long; top-notch cut flowers. Late August, September.

‡**Summer Snow.** 3 ft. A new white variety; we need more spire-like flowers in summer gardens. July, August.

‡**Vivid.** 18 in. Ideal dwarf kind with deep pink bloom. September.

TWO CHOICE TENDER PERENNIALS

In the North both should be treated as annuals. They are best grown in full sun.

CONVOLVULUS mauritanicus. A miniature Morning-Glory for the rock garden and borders. Attractive blue flowers from June to frost. Trailing habit, only 6 inches high. 3 for 75c; 12 for \$2.50.

NIEREMBERGIA hippomanica. Our own strain, propagated from cuttings and much superior to seedlings. Compact plant about 6 inches high. Cup-shaped blue flowers all summer and early fall. 3 for 50c; 12 for \$1.85; \$12.00 per 100.

MATRICARIA (Feverfew)

Choose a sunny or partly shaded place in ordinary soil.

‡**Double White.** Button-like white flowers on 12 to 15-inch stems. Splendid for cutting. June, July.

‡**Double Yellow.** Like the white but more dwarf. Grows only 8 to 12 inches high.

MYOSOTIS (Forget-Me-Not)

Likes very moist soil and part shade.

***Palustris semperflorens.** See color illustration on page 2.

‡**Palustris, Pink Beauty.** A lovely pink form of the above.

NEPETA (Catmint)

Plant in ordinary soil in full sun.

***Mussini.** 12 in. Deep blue flowers and grayish foliage make a pleasing combination.

*‡**Mussini, Six Hills Giant.** 18 in. Improved form; fine for an informal border or edging.

***Mussini superba.** A novelty of merit, very low and compact in growth. Covered with deep lavender-blue flowers in late spring and early summer. 3 for \$1.60; 6 for \$3.00; 12 for \$5.00; 60c each.

OENOTHERA

***Missouriensis.** 10 in. A trailing plant bearing great quantities of big yellow flowers often 5 inches across. Plant it in sun or part shade, in ordinary soil. June to August.

PEONIES

Best planted in the fall. A complete list will be featured in the Fall 1950 Catalog, or refer to our Fall 1949 issue.

TREE OR BUSH PEONIES

Strong 5-inch pot plants available for spring delivery

The stems do not die to the ground each year but in the course of many seasons they will reach a height of 3 to 4 feet. Most varieties bloom in early spring—late April to the end of May, depending on the locality. They are of easy culture and grow anywhere other Peonies do. It is best, however, to plant them where they are sheltered from sweeping winds.

Archiduc Ludovico. Large; flesh-pink, turning to soft lilac. \$5.00 each.

Argosy. Single; pure yellow. \$11.50 each.

Athlete. Glazed mauve, shaded rose. \$5.50 each.

Flora. Pure transparent white, slightly blotched violet, carmine at throat. \$12.50 each.

Jules Pirlot. Satiny pink, flushed carmine. \$6.00 each.

La Lorraine. Large, double flowers of soft sulphur-yellow with a salmon tinge when opening. \$8.50 each.

Satin Rouge. Double; blood-orange. An altogether new color in Peonies. \$12.50 each.

Yaso-no-Mine. Semi-double; pure white. \$25.00 each.

PHLOX. See pages 2 and 15.



STOKESIA, Blue Moon
Giant aster-like blooms. See page 17.

HEMEROCALLIS (DAYLILY)



HEMEROCALLIS, "Leonian" Hybrid

The hybridizers have wrought wonders with the old-fashioned Daylily. The improvements include a wider color-range, and extended period of bloom, larger flowers, and sturdier plants. What is more, Hemerocallis are amazing in their adaptability; they are extremely hardy and will thrive under the most ordinary conditions, blooming in full sun or partial shade. Their vigor is especially evident in dry seasons and insect pests have little effect on them.

- ‡**Dr. Regel.** Rich orange-yellow. May.
- ‡**Flava.** Sweet-scented; clear yellow. June.
- ‡**Florham.** Golden yellow.
- ‡**Kwanso.** A distinct double-flowering form of rich golden bronze. July, August.
- *‡**Minor.** 18 in. A miniature form with pale yellow flowers. May, June.
- ‡**Thunbergi.** Buttercup-yellow. July, August.

Any of the above, 55c each; 3 for \$1.25; 6 for \$2.25; 12 for \$4.25

Special Collection of Daylilies

TO GIVE YOU BLOOMS FROM JUNE TO MID-SEPTEMBER

One each of August Pioneer, J. A. Crawford, Modesty, Goldeni, Imperator, Curly Pate, Mikado, and Mrs. W. H. Wyman

OFFER No. 5S-9: 8 plants, 1 each of the 8 varieties, \$4.85

OFFER No. 5S-9A: 24 plants, 3 of each, \$11.50

NEW GIANT-FLOWERING HYBRIDS

‡Hyperion

This variety is one of the most popular and beautiful of all Daylilies, and we heartily recommend it for every garden. The large flowers are pale canary-yellow in color, and appear in July and August—just at the time when the summer garden needs rejuvenation. A prolific bloomer, Hyperion makes a spectacular showing. Plant at least three in a group, and watch them grow more beautiful every year. 3½ ft.

75c each; 3 for \$2.00; 5 for \$3.00

The New "Leonian" Hybrid Hemerocallis. Magnificent new creations ranging in height from 3 to 5 feet. Giant-sized blooms in various shades from orange-red to maroon. This is an exclusive strain offered only by Carroll Gardens. Offered in mixed shades only. 3 for \$2.50; 5 for \$4.00; 12 for \$8.50.

‡**August Pioneer.** 2½ ft. Chrome-orange blooms of medium size. Especially valuable for its late period of bloom—early August through September. \$1.25 each; 3 for \$3.50.

- ‡**Bagdad.** 5 ft. Large flowers borne on plants of considerable height; coppery red petals with orange throat. July. \$1.00 each; 3 for \$2.50.
- ‡**Boutonniere.** 2½ ft. Flourishing cluster of small flowers. The throat of each is orange-yellow with darker petals. August, September. 75c each; 3 for \$2.00.
- ‡**Cinnabar.** 2 to 3 ft. Orange base sprinkled cinnamon; recurving sepals and petals. Free blooming. July. 75c each; 3 for \$2.00.
- ‡**Curly Pate.** 4½ ft. Medium-sized yellow, cup-shaped flowers; petals curled at ends. 55c each; 3 for \$1.25.
- ‡**Dover.** 4 ft. Large; clear orange. June, July. 75c each; 3 for \$2.00.
- ‡**Fulva Rosea.** 3 ft. Fulvous rose with a red zone and yellow shading at the base. A choice variety of subtle color. July, August. \$2.00 each; 3 for \$5.00.
- ‡**George Yeld.** 4 ft. Distinctly large; the outer petals are rich orange-yellow and the inner flushed with rose. July, August. 75c each; 3 for \$2.00.
- ‡**Goldeni.** 2 ft. Deep golden orange; attractive in form; very free-flowering. Late June to August. 55c each; 3 for \$1.25.
- ‡**Imperator.** 4 ft. A distinct variety with rich orange-red coloring. July, August. 60c each; 3 for \$1.50.
- ‡**J. A. Crawford.** Clear gold. 60c each; 3 for \$1.50.

- ‡**J. R. Mann.** 2½ ft. Frosted apricot-yellow flowers. July, August. 65c each; 3 for \$1.65.
- ‡**Linda.** 3½ ft. The crinkled petals are golden yellow with cinnamon markings. July, August. \$1.00 each; 3 for \$2.50.
- ‡**Mikado.** 3 ft. A glamorous combination—orange with a mahogany-red spot on each petal. Occasionally blooms in the fall. June, July. 75c each; 3 for \$2.00.
- ‡**Modesty.** 4 ft. Palest yellow; amazing in size. June. 75c each; 3 for \$2.00.
- ‡**Mrs. A. H. Austin.** 2½ ft. Cup-shaped, deep orange-yellow blooms. August. \$1.00 each; 3 for \$2.50.
- ‡**Mrs. W. H. Wyman.** 3½ ft. Best described as pale glistening yellow. August. 65c each; 3 for \$1.65.
- ‡**Ochroleuca.** 3½ ft. Small, pale yellow flowers particularly effective in the evening. July, August. 55c each; 3 for \$1.25.
- ‡**Ophir.** 4 ft. Its rich golden yellow coloring has made this a favorite variety. July. 75c each; 3 for \$2.00.
- ‡**Serenade.** 4 to 5 ft. A subtle pastel combination of yellow and pink with petals that are twisted and crinkled. June, July. \$1.00 each; 3 for \$2.50.
- ‡**The Gem.** 3 ft. An unusually popular yellow variety; large size. July, August. 65c each; 3 for \$1.65; 6 for \$3.00.

SHASTA DAISIES (Chrysanthemum Maximum)

The Shasta Daisies are among the most desirable of all cut-flower material, and are easily grown in well-drained, average garden soil. A sunny location suits them best; however, they can stand a little shade. The long-stemmed flowers are long lasting when cut. They are all nice clean whites that are unusually useful to work in with other flowers in bouquets and decorations.

NOVELTY—Shasta Daisy, Aglaia

A sensational new Shasta. Large double flowers with fringed petals. Blooms nearly all summer. A sturdy grower and perfectly hardy. 3 for \$2.75; \$1.00 each.

- ‡**Beaute Nivelloise.** A fine new Shasta Daisy with large flowers, having two rows of lacinated petals and a clear yellow center. 18 to 24 in. All summer. 3 for \$1.50; 6 for \$2.75.
- ‡**Full Proof.** An outstanding new Daisy. Very hardy; excellent grower. Blooms are large. Blooms off and on all summer. 3 for \$1.50; 6 for \$2.75; 60c each.
- ‡**Edgebrook Giant.** A new variety of merit with 5 to 6-inch blooms on long straight stems. Overlapping, closely set petals with a clear yellow center. 3 for \$2.00; 6 for \$3.50; 75c each.
- ‡**Esther Reed.** Fully double white flowers of good lasting quality. The blooms are 3 to 4 inches in diameter, and come rather freely on the sturdy plants. 1½ to 2 ft. Summer and fall. 3 for \$1.50; 6 for \$2.75; 65c each.
- ‡**Fringed Beauty.** Large fringed, fluffy, almost double flowers much like China-aster. Sturdy grower with stiff 18-in. stems. Blooms practically all summer. 75c each; 3 for \$2.00; 6 for \$3.75.
- ‡**Majestic.** Large white flowers, 5 to 6 inches across, with a small yellow center, are produced intermittently throughout the summer. Petals are straight, overlapping, and do not droop; stems are stiff and stand up well. Easily grown, it withstands adverse conditions. By far the finest single Shasta Daisy. 18 to 24 in. 3 for \$2.00; 6 for \$3.75; 12 for \$6.50; 75c each.
- ‡**Marconi.** A novelty with extra-large, double flowers about 5 inches across. We have the true stock propagated from divisions and feel sure you will be pleased with it. 2 to 3 ft. All summer. 3 for \$1.65; 12 for \$6.00; 65c each.
- ‡**Mark Riegel.** New this year. We are very much pleased to be able to offer this stunning new Shasta Daisy. It is a strong grower 2 feet tall and almost as broad. Makes a fine garden display. Well-formed, 4-inch, single flowers—as many as 100 in a summer. Splendid for cutting. Stock limited. 3 for \$4.00; \$1.50 each.
- ‡**Mt. Shasta.** Full double white flowers 3 to 4 inches in diameter with a high crested center. Stems 18 to 24 inches long make it excellent for cutting. Blooms off and on all summer. 3 for \$1.65; 6 for \$3.00; 65c each.
- ‡**Supreme.** Extra-large, single white flowers. 2 ft. June, July. 3 for \$1.25; 6 for \$2.25; 55c each.
- ‡**Mixed Hybrids.** Grown from seed. 4 for \$1.00; 12 for \$2.50.



SHASTA DAISY Majestic



HARDY FERNS

PERENNIAL HERBS

Most herbs have simple requirements. Average, well-drained soil in full sun will suit most varieties listed, unless otherwise noted. May we suggest that the culinary herbs especially be planted where you will have easy and frequent access to them? Then, as the occasion arises, you may easily secure a few fresh leaves for your cooking needs, and many a delightful, appetizing dish will grace your table.

Prices on Herbs are: 3 of any one kind for \$1.25; 6 for \$2.25; 12 for \$4.25; 55c each, except where noted.

BALM, Lemon (*Melissa officinalis*). 2 ft. Dark green leaves, deliciously scented like Lemon Verbena. Used for tea, or as a garnish for cool summer beverages. Rich moist soil, sun or part shade.

CHIVES (*Allium Schoenoprasum*). 12 in. The smallest variety of the Onion family. Try adding the finely chopped leaves to your omelets and salads. Grow in rich soil.

GERMANDER (*Teucrium Chamædrys*). 12 in. An excellent edging for your herb garden. Can be clipped like boxwood. Dark, glossy, closely set leaves; rose flowers.

LAVENDER. See page 11.

ROSEMARY (*Rosmarinus officinalis*). Tender perennial, except in the far south, but can be wintered indoors in the window garden. This indispensable herb has narrow, dark green leaves, gray beneath, of a sweet spicy fragrance. The leaves are delicious added to sandwich fillings and soups.

SAGE (*Salvia officinalis*). 2½ ft. Always interesting in the herb patch or garden. Gray, pebbly foliage; purple-blue flower spikes. Leaves are used for flavoring meats.

SAVORY (*Satureia*).

S. montana. Winter Savory. 12 in. This fine herb, of neat habit, is valuable for edging purposes or in the wall or rock garden. White flowers. Used for seasoning meat dishes and soups.

S. montana lilacina. A very worthwhile new Savory with lavender-blue flowers. Hardy and easy to grow.

TARRAGON (*Artemisia Dracunculus*). 2 ft. Narrow dark green, glossy leaves, very aromatic. This is one of the most useful of the culinary herbs, used to flavor vinegar, fish dishes, soups, and salads.

THYME (*Thymus*). Thyme, in its many forms, is one of those universally loved, fragrant plants. Some varieties are shrubby, woody types, while others are low growing and creeping. All are interesting for various garden uses, as noted. All varieties do best in well-drained, rather light soil in full sun.

Caraway-scented (*T. herba-barona*). 4 in. Trailing type, useful for flavoring beef dishes.

Common (*T. vulgaris*). 12 in. Upright, somewhat spreading habit of growth; narrow leaves and purplish flowers. The most widely used Thyme for flavoring poultry dressing.

Crimson (*T. Serpyllum coccineus*). 4 in. Prostrate, creeping habit of growth; crimson flowers. Used in wall plantings, rock gardens, and in the crevices of stone walks. Dark green foliage.

Lemon (*T. citriodorus*). 6 in. Blue-green leaves with a distinct lemon fragrance and flavor.

Lemon, Golden-edged Variegated (*T. citriodorus aureus variegatus*). The dark green leaves are edged with gold. Thick bushy plants.

Lemon, Silver-edged Variegated (*T. citriodorus argenteus variegatus*). Similar to *T. citriodorus*, but the slightly smaller leaves are margined with silver.

White (*T. Serpyllum albus*). Thick close mats of bright green foliage are covered in early summer with tiny pure white flowers. Best of the creeping types for winter effect.

Space does not permit a full description, but the following varieties are also available:

Costmary

Lavender-Cotton

Mint

Apple Mint

Apple Mint, Variegated

Peppermint

Spearmint

Rue

Woodruff, Sweet

SWEET-SCENTED GERANIUMS

Lemon, True, Finger Bowl (Prince Rupert; *crispum*). 12 to 18 in. One of the choicest, lemon-scented. Curious leaves with crisped edges. Pink flowers.

Rose (*graveolens*). 2½ ft. Large, much-divided leaves; rose flowers. Grandmother frequently placed a leaf in the bottom of her glasses of apple jelly, thus imparting an additional flavor.

LEMON VERBENA (*Lippia citriodora*). A tender herb, with refreshing lemon-scented leaves. Dried leaves are excellent for teas, pot pourri, and old-fashioned sweet bags.

HARDY OUTDOOR FERNS

Ideal plants for shady spots in the garden

3 of any one variety for \$1.50; 6 for \$2.50;
12 for \$4.25

LEATHERWOOD FERN. Evergreen. Attractive and vigorous grower. 2 to 3 ft.

MAIDENHAIR FERN. One of the most distinct and beautiful Ferns. Prefers a moist, shady location. 18 to 24 in.

LADY FERN. Exceedingly showy and vigorous. Shade. 2 to 3 ft.

TOOTHED WOODFERN. Almost evergreen. Fine effects when massed in shade. Prefers a rich, moist soil. 2 to 3 ft.

CINNAMON FERN. Strong, vigorous growing, suited to varied locations in shade or semi-shade. 3 to 4 ft.

CHRISTMAS FERN. Evergreen. Extremely ornamental for massing in shade or partial shade. 1 to 2 ft.

OSTRICH FERN. Bold growing, usually along streams. Very ornamental in a moist, shady location. 3 to 5 ft.

ROYAL FERN. A strong, tall species that thrives in shady or sunny locations. 3 ft.

WILD FLOWERS

3 of any one variety for \$1.25; 6 for \$2.25;
12 for \$4.25; 50c each, except where noted

The following are available:

Cypripedium. Lady Slipper.

Acaule

Pubescens

Spectabile

Dodecatheon Meadia. Shooting-Star.

Gentiana Andrewsii. Bottle Gentian.

Hepatica

Mertensia virginica. Virginia Bluebells.

Sanguinaria canadensis. Bloodroot.

Shortia galacifolia. Oconee-Bells.

Tiarella cordifolia. Foam-Flower.

Trillium grandiflorum

Sessile luteum

Stylosium

CHOICE AND RARE CONIFEROUS EVERGREENS

We offer young potted plants of the following varieties for you to grow on. The size following the name indicates the approximate height at maturity.

ARBORVITAE

***Occidentalis, Little Gem.** 2 ft. A dwarf variety excellent for the rock garden. Does well in a sunny location in average soil. 3 for \$2.00; 6 for \$3.50; 75c each.

YEWS (Taxus)

Average, well-drained soil and a position in either sun or shade is suitable for Yews.

Baccata fastigiata. Irish Yew. 25 ft. Symmetrical, upright growth. Not very hardy in the North.

Baccata repandens. Spreading English Yew. 3 ft. A good rock-garden variety.

Canadensis stricta. 18 in. Suitable for edging and where low plants are needed.

Cuspidata. Spreading Yew. 5 ft. One of the most commonly used evergreens for foundation and group plantings.

Cuspidata capitata. Upright Yew. 25 ft. Although this beautiful evergreen grows to 25 feet in height, it will stand much pruning, and can therefore be kept to any height or shape desired.

Cuspidata nana. Dwarf Yew. 3 ft. A popular dwarf variety for rock gardens and in front of taller evergreens.

Media. 4 ft. One of the finest of the spreading Yews. Bushy.

Media Hatfieldi. Hatfield Yew. 10 ft. Compact bush of broad, upright growth.

Media Hicksi. Hicks Yew. 15 ft. Of narrow, upright growth. This new variety will replace the old Irish Juniper where narrow, upright trees are needed.

Media Kelseyi. Fairly slow grower; dark green, dense needles on an upright bush. Bright red berries even on small plants; larger sizes are full of them.

Newport. This is the narrowest-growing Yew we have ever grown. Foliage is a good green color. Adaptable to places where most other plants would be too wide.

All the above Yews, young potted plants, 4 to 10 in. high, depending upon the habit of growth of the various kinds. 3 of any one kind for \$2.00; any 10 assorted kinds for \$6.00; 100 for \$48.50.

JUNIPER (Juniperus)

Prostrata venusta. Blue Creeping Juniper. An ideal little creeping evergreen. Splendid in the rock garden. Glauca blue foliage. Give it a sunny location in ordinary, well-drained soil. 75c each; 3 for \$2.00; 6 for \$3.50.

RETINOSPORA (Chamaecyparis)

Average garden soil and a sunny location is suitable.

Obtusa nana. Dwarf Hinoki Cypress. 3 ft. A little gem with graceful dark green foliage. Dense, bushy growth. 75c each; 3 for \$2.00.

Pisifera squarrosa pygmaea. "Little Silver Ball." 18 in. An unusual little evergreen. Thick, bushy growth, forming small globe-shaped plants. Foliage silvery green. Fine for rock gardens. 75c each; 3 for \$2.00; 6 for \$3.50.

HARDY NATIVE PLANTS

In preparing your garden soil for these wild flowers and ferns, mix plenty of leaf mold from the woods with it. The object is to make the growing conditions as much as possible like those you would find in woodland areas. A moist, shaded location suits these plants.



CYPRIPEDIUM spectabile (Lady Slipper)

Hardy Summer PHLOX

Hardy Phlox is the backbone of your garden during the summer months when color is needed most

Phlox can be depended upon to produce a great abundance of bloom over a long period. For a colorful display select early, midseason, and late kinds. Plant broad masses of white with the brighter colors. Three plants of an individual variety grouped together will make a brilliant showing. Hardy Summer Phlox prefers good, rich garden soil and a sunny location. If your soil is poor, add manure. This will provide the necessary food that these plants like. They are all benefited if they are watered during extremely dry seasons. Phlox should have full sun for best results.

HERE ARE 8 TOP-NOTCH VARIETIES

Illustrated on this page

- | | | |
|-----------------|-------------------|----------------------|
| 1. Border Queen | 4. Salmon Beauty | 7. San Antonio |
| 2. Starlight | 5. Leo Schlageter | 8. Charles H. Curtis |
| 3. Mary Louise | 6. Silvertone | |

OFFER NO. 5S-10: 8 plants, 1 each of the 8 varieties \$3.25

OFFER NO. 5S-10A: 16 plants, 2 of each 5.75

OFFER NO. 5S-10B: 24 plants, 3 of each 9.50

Free with Each Offer (1, 2 and 3 plants): Prime Minister, a lovely white variety with red eye.

CHARLES H. CURTIS



New and Better Varieties

Adonis. *New.* 2 to 2½ ft. Brilliant, medium to dark red. Healthy, vigorous grower. Late. 65c each; 3 for \$1.65; 12 for \$5.50.

Appleblossom. 2½ to 3 ft. Soft pink. Midseason.

Augusta. Pat. 252. 2½ ft. American-Beauty red. 3 for \$1.50; 12 for \$5.50.

Border Queen. 1½ ft. Large florets of deep watermelon-pink. Early.

Caroline Vandenberg. 2 ft. Lavender-blue hybrid. Midseason.

Charles H. Curtis. 2½ ft. Sunset red.

Chesapeake. 1½ ft. Large heads of Tyrian rose flowers with a silvery white reverse.

Count Zeppelin. 2½ ft. Each white floret has a red center.

Daily Sketch. 2½ to 3 ft. Salmon-pink florets marked with crimson. Midseason.

E. I. Farrington. 3 ft. Salmon-pink. Midseason.

Fairy King. 2 ft. Large rounded heads of soft lavender. Resistant to disease.

Leo Schlageter. 2½ ft. Scarlet-red with an orange cast. Midseason.

Lillian. 2 to 2½ ft. Cameo-pink; each floret has a blue eye. Early.

Mary Louise. 2½ ft. Best white. Vigorous growth; clean foliage. Late.

Meis Copijn. *New.* 2 ft. Clear pink flowers with deeper color at center; massive trusses. Midseason. 65c each; 3 for \$1.65; 12 for \$5.50.

Mia Ruys. 1½ ft. Dwarf; pure white. Midseason.

Miss Lingard. 2½ to 3 ft. White flowers delightful for cutting. Very early.

Mrs. Jenkins. 2½ ft. An old white standby of medium height. Midseason.

Pinkette. A lovely new kind. White, tinted pink throughout. 65c each; 3 for \$1.65; 12 for \$5.50.

Progress. 2½ ft. Light blue with deeper purple-blue eye.

Redbird. *New.* 1½ to 2 ft. Fiery brilliant red. Most attractive. Early. 65c each; 3 for \$1.65; 12 for \$5.50.

Rosalinda. A pink form of Miss Lingard.

Ruby Lee. 2 ft. Extra-large, plum-red flowers. Healthy, vigorous growth; medium height.

Salmon Beauty (Eva Foerster). 2 ft. Salmon-pink, accentuated with white eyes. Midseason.

San Antonio. Dark blood-red; outstanding.

Silvertone. 2 ft. Clear lavender.

Starlight. Violet-red florets shading lilac; white center.

World Peace. 2 to 2½ ft. Most outstanding new clear white. Early. 65c each; 3 for \$1.65; 12 for \$5.50.



SAN ANTONIO

All Phlox are \$1.25 for 3 of one kind; \$2.25 for 6 of one kind; \$4.25 for 12 of one kind; 55c each, except where noted.

CARROLL GARDENS NEW AND BETTER PERENNIAL AND ROCK PLANTS, continued

‡ indicates varieties suitable for cutting.

* indicates varieties suitable for rock gardens or low borders.

3 of any one variety for \$1.25; 6 of any one variety for \$2.25; 12 of any one variety for \$4.25; 55c each, except where noted



THALICTRUM, Lavender Mist
A dainty filler for bouquets. See page 17

PLUMBAGO (Leadwort)

***Larpentæ.** 12 in. Rich foliage and deep blue flowers in late summer; useful for sunny or shady ground-covers or for the rock garden. Plant in ordinary soil, in a sunny or shady place. July to September.

POLEMONIUM

***Blue Pearl.** Jacobs-Ladder. 12 in. A dwarf Polemonium with great clusters of light blue flowers. Graceful foliage. The plants grow well in partial shade or full sun. May.

POPPIES, Oriental. America's finest listing will be offered in our Fall 1950 Catalog for late summer and fall planting, or refer to our Fall 1949 issue.



VIOLA, Purple Glory

These attractive, large, rich purple flowers are freely produced from early spring to fall. Plants rather compact in growth. One of the easiest Violas to grow. 3 for \$1.25; 6 for \$2.25; 12 for \$4.25.

PLATYCODON (Balloon-Flower)

Dependable, hardy plants giving a wealth of bloom for a long time during the summer, when color is most needed in the garden. They are easily grown in any average soil. Full sun is preferred, but they will do fairly well in part shade.

Grandiflorum cæruleum. 3 ft. Lavender-blue. Blooms from June to August.

Grandiflorum Mariesi. 18 in. A useful dwarf kind for the foreground of the border. Deep violet-blue flowers.

Grandiflorum Mariesi album. A white-flowering perennial that is hard to beat.

Any of the above, 55c each; 3 for \$1.25; 6 for \$2.25; 12 for \$4.25

3 Outstanding New Balloon-Flowers

‡**New Shell-Pink.** 18 in. Distinctive pale pink flowers. Blooms freely all summer.

‡**Double White.** Beautiful double blooms on 18 to 24-inch plants. Excellent for cut flowers and for garden decoration.

‡**Double Blue.** A good companion for Double White.

Any of the above, 65c each; 3 for \$1.65; 6 for \$3.00; 12 for \$5.00

PYRETHRUM (Painted Daisy)

New and Better Varieties

Pyrethrums are special favorites with us because of their simple beauty of form, their wide use as cut flowers, and their attractive appearance in the garden. Height 18 to 24 inches. A sunny location in average soil is best for them. Divide the plants every other year in very early spring or early fall to keep them thriving.

All Pyrethrums are: Any 3 for \$2.00; any 6 for \$3.75; any 12 for \$7.00, except where noted.

‡**Brilliant.** Red; almost double blooms.

‡**Crimson Giant.** The large, pure scarlet blooms are accentuated with golden yellow centers.

‡**Eileen May Robinson.** Single, lustrous pink flowers 4 to 5 inches across, on 30-inch stems.

‡**Florence Shadley.** Double, light pink.

‡**Pink Bouquet.** A delightful pink variety with a crested center.

‡**Purity.** Finest double white.

‡**Rosary.** New. Double bright pink; sturdy growth.

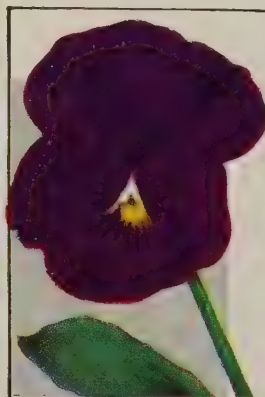
‡**Rose Mist.** New. Rose-carmine petals with double-crested rose center. Sturdy grower and free bloomer. See color illustration on page 11.

‡**Silver Tips** (Barbara Shum). New. The double red blossoms have tiny white markings at the tips of the petals.

‡**Single, Mixed.** A delightful strain for broad masses.

‡**Single and Double Mixed.** A fine strain of various colors.

Either of above, 3 for \$1.25; 6 for \$2.25; 12 for \$4.25



VIOLA, Purple Glory

*PRIMULA (Hardy Primrose; Cowslip)

All Primulas are best planted in fairly rich, moist soil and shade; however, many varieties of the Polyantha and Juliae type will get along nicely in full sun if watered often during summer months. See color illustration on page 2.

Acaulis, New Giant-Flowering. 4 in. A splendid strain with large flowers of many different colors. 3 for \$1.25; 12 for \$4.25.

Acaulis, Blue. A lovely blue. 3 for \$1.65; 65c each.

Acaulis rubra. Large, brilliant crimson flowers, very freely produced. A good grower; rare. 3 for \$1.25; 12 for \$4.25.

Auricula, Giant Hybrids. Unusual and distinct Primula. Large flowers in various colors on 6 to 8-inch stems. 3 for \$1.35; 12 for \$5.00.

Cachemiriana. Large, round heads of bright violet on 12 to 15-inch stems. See color illustration on page 11.

Juliae, Edelstein. A new variety with red flowers. 3 for \$2.00; 75c each.

Juliae, Mrs. McGillivray. Large flowers of old-rose. Rare. 3 for \$2.00; 75c each.

Juliae, Primrose Lodge. Large, deep crimson flowers on 4 to 6-inch stems. Free and early bloomer. 3 for \$1.50; 60c each.

Juliae, Wanda. Deep bluish purple, almost violet. Very free blooming, 3 for \$1.50; 60c each.

Primula Polyantha

Munstead Giant Strain. Flowers of large size. Shades of yellow from cream to rich orange, as well as pure white and charming types with eyes of different colors. They make a fine effect in spring. Plant them in a damp, shaded spot. 3 for \$1.25; 6 for \$2.25; 12 for \$4.25; 25 for \$8.00; \$22.50 per 100.

Munstead Giant Strain, Yellow Cream, or Red. 3 for \$1.25; 12 for \$4.25.

‡**Polyantha Colossea.** A magnificent new development of this old garden favorite, with flowers of exceptional size—often 2 inches across. They are produced in great numbers and display an immense variety of coloring from white to cream, yellow, scarlet, purple, and crimson. Borne on strong stems, they are excellent for cutting as well as making a splendid show in the garden. 3 for \$1.50; 6 for \$2.75; 12 for \$5.00; 25 for \$9.50; 65c each

ROSEMARY. See page 14.

SCABIOSA. See back cover.

RUDBECKIA (Coneflower)

Needs only average soil and a sunny location.

‡**Golden Storm.** 15 to 18 in. An imported novelty. Golden yellow, daisy-like flowers with black center. Blooms nearly all summer. Easily grown in any soil. 3 for \$1.50; 6 for \$2.75; 65c each.

‡**Purpurea, The King.** Large, star-like, crimson-red flowers on stiff, 4 to 5-foot stems. See color illustration on page 12. 3 for \$1.75; 6 for \$3.25.

‡**White Lustre.** 2½ to 3 ft. White blossoms borne freely on sturdy stems from late June to September. 3 for \$1.75; 6 for \$3.25.



TRITOMA HYBRID Robin Hood

Brilliant spire-like blooms useful as accents in the garden and in bouquets. See page 17.



HARDY CREEPING VERBENA, *Flame*

It blooms and blooms from spring to heavy frost.

SALVIA (Sage)

- ***Officinalis.** See page 14.
- ‡**Pitcheri.** See back cover.

SAPONARIA (Soapwort)

- ***Ocymoides splendens.** A rapidly spreading plant doing best in a sunny, well-drained place. The dense masses of pink flowers which appear in late spring add color to rock gardens and bank plantings.

SEDUM (Stonecrop)

Ordinary soil and either full sun or partial shade is satisfactory.

- ***Sieboldi.** See color illustration on page 2.
- ***Spectabile, Brilliant.** 18 in. A common but worthwhile perennial with large, flat heads of bright rose-pink flowers in September and October.
- ***Spurium, Dragon's Blood.** Bright carmine-red flowers appear above bronzy red foliage from July to September, creating charming contrasts. An excellent plant for the wall or rock garden.

SILENE

- ***Alpestris fl.-pl.** A very fine double-flowered rock-garden plant, choice and rare. Easily grown in average soil, preferably in full sun but will stand a little shade. The white flowers are very showy and are produced freely on 6 to 8-inch stems from late May to July.

STATICE (Sea-Lavender)

- ‡**Latifolia.** 2 ft. The large loose heads of purplish bloom are soft and pleasing in color. Plant in ordinary soil, in full sun. July, August.

STOKESIA

- ‡**Blue Moon.** 18 in. Giant lavender blooms off and on all summer. Fine for the border. Easily grown in sun or part shade in good garden soil. See color illustration on page 12. 3 for \$1.50; 6 for \$2.75.

TARRAGON. See page 14.

THALICTRUM (Meadow Rue)

- Lavender Mist.** 4 to 5 ft. For the background of a perennial border. Sprays of delicate lavender flowers with cream centers are carried on slender, stiff stems. Blooms freely in late summer. Perfectly hardy. Plant in sun or part shade. See color illustration on page 16. 3 for \$1.65; 6 for \$3.00; 12 for \$5.50; 65c each.

THYMUS. See pages 2 and 14.

TRADESCANTIA (Spiderwort)

Ideal plants for shady locations.

- ***Brevicaule.** Dwarf. Rose-pink.
- Blue Stone.** Rich blue.
- Iris Pritchard.** White heavily stained azure-blue.
- J. C. Weguelin.** Light azure-blue.
- James Stratton.** Delphinium-mauve.
- Leonora.** Deep rich violet.
- Pauline.** Rosy mauve.
- Purple Dome.** Rich purple.

TROLLIUS

All Trollius prefer rather rich and moist soil, and at least partial shade. These giant buttercup-like flowers are very showy and create much interest.

- Europæus, Pritchard Giant.** Showy, very large, globe-shaped, orange flowers on 2-foot stems during May and June and occasionally again in the fall.
- Europæus, Lemon Queen.** Similar to the above but with lemon-colored flowers.
- Ledebouri, Golden Queen.** 3 ft. A handsome variety with large open flowers of beautiful golden yellow. In bloom about three weeks later than Europæus sorts—June and July.

All Trollius, 75c each; 3 for \$2.00; 6 for \$3.75; 12 for \$7.00



VIOLET, Royal Robe
Large flowers in spring and fall.

TRITOMA (Red-Hot Poker)

These striking spire-like blooms make effective accents in the perennial border and are charming in flower arrangements. Plant in a well-drained, sunny place and give the plants a light mulch of excelsior or any other suitable material for winter protection.

- ‡**Glow.** A refined variety, 18 inches high; many coral-red blooms in June. Small, graceful foliage. 3 for \$1.65; 6 for \$3.00; 65c each.
- ‡**Golden Sceptre.** 3 ft. Hardy, vigorous variety with saffron-yellow spikes during late June and early July. 3 for \$1.75; 12 for \$6.00; 75c each.
- Robin Hood.** A new giant hardy Tritoma with better color, larger blooms, and more hardiness than the well-known Red-Hot Poker. Strong stiff stems 2½ feet high. Blooms freely in late summer months. 3 for \$2.00; 75c each.
- ‡**Springtime.** Pat. 318. Contrasting coral-red and cream; late June and July. 3 for \$1.75; 75c each.
- ‡**White Fairy.** 2 ft. An unusually good hybrid. The pure white bloom spikes are open and graceful. June, July. 3 for \$1.75; 75c each.
- W. S. Reeves.** A new giant Tritoma with bloom spikes 8 to 12 inches long. Grows 4 to 5 feet high. Pure scarlet. Midsummer bloom. 3 for \$2.75; \$1.00 each.

TUNICA (Tunic-Flower)

These lovely trailing rock-garden plants have grass-like foliage and masses of double flowers similar to baby's-breath, from early summer to frost. Best grown in well-drained, soil in a sunny rock garden.

- ***Saxifraga alba flore-pleno.** 6 in. A rare new double white form.
- ***Saxifraga rosea flore-pleno.** 6 in. Lovely double rose-pink flowers from June to November.

HARDY VERBENA

Not too dependably winter-hardy in cold sections; however, it can be wintered in a cold-frame or greenhouse.

- ***Flame.** This beautiful creeping plant blooms continuously all summer. It spreads rapidly and is covered with fiery rose-scarlet blooms. From the time it is planted until heavy frost, it blooms and blooms. Fine for the rock garden or border. See color illustration. 3 for \$1.65; 6 for \$3.00; 12 for \$5.00; 65c each.

VERONICA (Speedwell)

Showy late spring and summer-blooming plants easily grown in any average soil, in full sun or partial shade.

- Blue Champion.** See back cover.
- ‡**Blue Peter.** This novelty has greatly impressed us because of its compact growth; the spikes of deep blue flowers are borne on stiff stems 18 inches long. 3 for \$1.50; 12 for \$5.50; 60c each.
- ‡**Blue Spire.** 18 to 24 in. Spire-like, deep blue flowers. June to September.
- ***Incana.** 12 in. Silver-gray foliage. Deep blue flowers in June.
- ***Incana rosea.** Same as above variety, with lovely pink flowers.
- ‡**Longifolia subsessilis.** Charming summer-blooming hardy plant that deserves a place in every garden, large or small. Beautiful blue flowers in 18 to 24-inch spikes. July to September.
- ***Rupestris.** Of creeping habit, forming a mat-like plant covered with deep blue flowers in May. See color illustration on page 2.
- ‡**Spicata alba.** Graceful white flowers on 18-inch spikes. June, July.
- ***True Blue.** 12 in. A lovely deep blue variety. Very attractive. May and June.

VINCA (Periwinkle; Myrtle)

- Minor, Bowles' Variety.** Glossy green foliage. Large, deep blue flowers. A very fine ground-cover in average soil, in sun but particularly good in shade. 3 for \$1.00; 12 for \$3.00; \$20.00 per 100.

VIOLA ODORATA (Sweet Violet)

Violets like fairly rich, rather moist soil and partial shade.

- ***Blue Giant.** Produces many large blooms on long stems in the spring and fall. Fairly sweet scented. Ideal for part shade. 3 for \$1.65; 6 for \$3.00; 12 for \$5.00; 65c each.
- ***Rosina.** The new pink fragrant Violet. Lovely pink and rose shades. Blooms freely in the spring and again in the fall.
- ***Royal Robe.** A distinct addition to the Violet family that deserves a place in the shady rock garden and as a ground-cover. See color illustration.



TROLLIUS. Among the very showiest of perennials.

GLADIOLUS

These giant individual blooms on well-formed spikes, in startlingly beautiful colors, will give you a real thrill. They may cost a few pennies more, but you will be repaid more than double. Be sure to plant some of them in your garden this spring. They will be your pride and the envy of your neighbors.

Gladiolus are easily grown in any good, well-drained garden soil in a sunny location. They may be planted at intervals for a succession of bloom from early spring until as late as the first of July. They make a splendid display in the garden and provide a source of cut flowers for home decoration.

New Imported Giant-flowering

- Acca Laurentia.** Large, orange and yellow.
- Gold Dust.** Deep yellow.
- Greta Garbo.** Large, ruffled, blush-white.
- Hopman's Glory.** Large, well formed, yellow.
- Johan S. Bach.** Large, orange-red.
- June Bells.** Excellent pure white.
- Leading Lady.** Cream sport of Picardy.
- Leeuwenhorst.** Most beautiful large clear pink Glad today.
- Mansoor.** New deep blood-red.
- Maskerade.** Amber-yellow with scarlet-crimson blotch.
- Mrs. Mark's Memory.** Strong, tall, purple.
- New Europe.** Beautiful large red.
- Paul Rubens.** New extra-large, glowing purple.
- Picardy.** Tall, salmon-pink.
- Rosa Van Lima.** Light pink.
- Salman's Glory.** Large, white with large red blotch.
- Silentium.** Large, pure white, scarlet markings.
- Snow Princess.** Beautiful white.
- Topscore.** Vermilion-scarlet with carmine blotch.
- Vincent Van Gogh.** New tall, deep salmon-scarlet.

TOP-SIZE BULBS OF ANY OF THE ABOVE GLADIOLUS:

| | |
|------------------------|--------|
| 3 of any one variety | \$0 45 |
| 6 of any one variety | 75 |
| 12 of any one variety | 1 35 |
| 25 of any one variety | 2 50 |
| 50 of any one variety | 4 50 |
| 100 of any one variety | 8 50 |

OFFER No. 5S-11: 50 bulbs, 5 each of any 10 of the above varieties, your selection, for \$5.25.

OFFER No. 5S-11A: 20 bulbs, 1 each of the 20 varieties listed above, not labeled or packed individually, for \$2.00.

OFFER No. 5S-11B: 60 bulbs, 3 of each, for \$5.00.

Carroll Gardens Special Blend Mixture of Gladiolus

For a riot of color in your garden and cut flowers for your home.
25 bulbs for \$2.25 50 bulbs for \$4.25 100 bulbs for \$8.00

Five Extra-New Beauties

- Abu Hassan.** Large, deep rich velvety blue.
- Boulogne.** Large, deep wine-red.
- General Eisenhower.** An outstanding novelty. Many large, clear rose-pink florets on a straight, tall stem.
- Modern Times.** Large, carmine-purple florets with narrow golden stripe, on a tall, straight stem.
- Spotlight.** Large, ruffled, deep yellow with scarlet blotch.

3 of any one variety for 85c; 6 for \$1.50; 12 for \$2.50
OFFER No. 5S-12: 15 bulbs, 3 each of the 5 varieties, separately packed and labeled, for \$3.25.
OFFER No. 5S-12A: 30 bulbs, 6 of each, for \$5.50.

Baby Gladiolus

We have received so many requests for this type of small Gladiolus during the last year or two that we have decided to offer the best available in the different colors. These are often referred to as semi-hardy Gladiolus; with protection, the bulbs can be left in the ground over winter south of Washington, D. C. Their small wiry stems and miniature blooms make them excellent for cutting for small bouquets. The bulbs must be planted very early; therefore, send your order as soon as possible.

- Blushing Bride.** White with carmine blotches.
- Brilliant.** Deep scarlet.
- Nymph.** Large, cream-white, with carmine blotches.
- Peach Blossom.** Rose-pink.
- Spitfire.** Scarlet-red.

6 of any one variety for 60c; 12 for \$1.00;
25 for \$1.90; 50 for \$3.75; any 100 for \$6.00
Mixture of Baby Gladiolus. 25 for \$1.75; 50 for \$3.25; \$5.25 per 100.



Carroll Gardens' Finest Tuberos-Rooted Begonias

Among the showiest of summer-flowering bulbs, lasting into the fall. Any good light soil with plenty of humus, in a fairly shaded location, will grow good Begonias. Mix a liberal amount of woods soil, well-rotted manure, compost or peat moss with garden soil to make it light in texture. Water often during dry seasons. These bulbs may be grown in window-boxes or large pots on shaded porches, or in any good selected spot in the garden that is fairly shaded and away from roots of trees that might rob them of all moisture and food. Such places as the north side of a wall or foundation are ideal. The blooms are perfect for cutting, particularly to float in water.

DOUBLE CAMELLIA-FLOWERED

Very showy, camellia-like flowers 4 to 6 inches across. White, Pink, Red, Orange, Yellow, Salmon and Scarlet.

DOUBLE CARNATION-FLOWERED

Large, frilled, carnation-like flowers. White, Pink, Red, Orange, Yellow and Salmon.

GIANT SINGLE FRILLED

Very large, single, frilled flowers. White, Pink, Red, Orange, Yellow and Salmon.

DOUBLE-FLOWERED HANGING BEGONIA

Flowers like the Double Camellia type but somewhat smaller, produced in great quantities on a weeping plant. Fine for window-boxes, hanging baskets and charming in rock gardens. White, Pink, Red, Orange, Yellow and Salmon.

PRICES ON ALL BEGONIAS OFFERED:

Top-size bulbs, each color and type separately labeled and packed, any 3 for \$1.25; any 6 for \$2.25; any 12 for \$4.25; any 25 for \$8.00; any 50 for \$15.00.

Special Mixture. Includes all types listed here except the Double-flowered Hanging Begonia. 12 for \$3.50; 25 for \$6.50; 50 for \$11.50.

TUBEROUS BEGONIAS, DOUBLE CAMELLIA-FLOWERED

OFFER No. 5S-13: 6 bulbs, 1 each of the 6 colors, White, Red, Pink, Yellow, Orange, and Scarlet, separately labeled, for \$2.00

OFFER No. 5S-13A: 18 bulbs, 3 of each, for \$5.00



Summer-Blooming Bulbs

Easily grown in full sun in good garden soil, unless otherwise noted.

ACIDANTHERA bicolor Murielæ. New introduction from western Abyssinia. Rigid stems, 3 feet and taller, with very sweetly scented, white flowers with crimson-maroon blotch. Excellent for cutting. Mid-August, September. 3 for \$1.00; 6 for \$1.85; 12 for \$3.50.

TIGRIDIA. Plant in a sunny position in flower border or bed, in well-drained soil. Set out in May, they give a continuous display of beautiful colors in midsummer. Each 2-foot stalk produces several flowers. 3 for 65c; 6 for \$1.10; 12 for \$2.00; 25 for \$3.85.



TIGRIDIA



This rare gem is as easy to grow as Gladiolus

ACIDANTHERA bicolor Murielæ



ISMENE calathina (Peruvian Lily)

MONTBRETIA, New Hybrids. A profusion of bloom ranging in color from golden yellow to brilliant scarlet, from July to frost. The single flowers are gracefully arranged along a clear, stiff stem about 2 feet long. A very desirable cut flower. 6 for 85c; 12 for \$1.50; 25 for \$2.85.

ISMENE calathina (Peruvian Lily). Showy sweet-scented, pearly white trumpet flowers borne three on a stem, similar to the amaryllis. Prefers a sunny location. Planted in May, they will commence flowering in July. 65c each; 3 for \$1.65; 6 for \$3.00; 12 for \$5.50.

GLORIOSA LILY, a Rare Beauty. A splendid low climber, easy to grow in the garden; it does well in sheltered spots out-of-doors, in sun or partial shade. Grows 2 to 3 feet high, producing a dozen or more gorgeous lily-like flowers of bright yellow and red. Blooms in late summer and autumn. Store tubers in winter like Gladiolus. 3 for \$4.00; 12 for \$15.00; \$1.50 each.



MONTBRETIA, New Hybrids



GLORIOSA LILY

AMARYLLIS, American-grown Giant Hybrid. Vigorous stems with several giant blooms of lily-like form. Colors range from the richest self-colors of crimson and red to pink, red, and scarlet markings on white ground. Offered in mixed colors only. \$1.00 each; 3 for \$2.75; 6 for \$5.00.

MAMMOTH ROYAL DUTCH HYBRID AMARYLLIS

This is the finest strain available. The flowers are superbly shaped and of mammoth size and pure colors. Only a very limited number of this genuine type is available.

Dark Red Shades
Pink and Rose Shades
Orange-Red Shades

White with Pink Stripes
Salmon-pink with white stripes
Pure White

Any of the above, \$3.25 each; any 3 for \$9.00; any 6 for \$17.00

CALLA LILY.

Yellow
White

Pink
Black-Throated

Any of the above, large bulbs, 75c each; any 3 for \$2.00; any 6 for \$3.75; any 12 for \$7.00

For a complete description, see our Fall 1949 Catalog.

GLOXINIA. A splendid summer-blooming plant for pot culture. Large, open, inverted bell-shaped flowers are freely borne above the velvety foliage. Mixed or Separate Colors: white, blue, rose, purple, red. 3 for \$1.35; 6 for \$2.50.

OFFER NO. 55-14: 5 bulbs, 1 each of the 5 colors, for \$2.00

OXALIS. Free-blooming plants which are fine for edging walks or flower beds and for the rock garden.

Lasiandra. A beautiful carmine-red. 12 for 95c; 25 for \$1.65; \$5.25 per 100.

TUBEROSE, Double. Lovely flowers of thick, wax-like texture set close to the 2-foot spike. A fine summer-blooming plant in the garden and for cutting. Rich, exotic fragrance. 6 for \$1.50; 12 for \$2.75; 25 for \$5.25.

DWARF SUMMER DAHLIAS, Unwin's Strain. Graceful, semi-double flowers in a wide range of colors, starting to bloom in early summer and continuing until frost. Many blooms on bushy, compact plants 18 to 24 inches tall. Do try them; you'll be more than pleased with them. Strong plants, mixed colors. 3 for \$1.00; 6 for \$1.75; 12 for \$3.25; 25 for \$6.00.



TUBEROSE



DWARF SUMMER DAHLIAS
Unwin's Strain

Carroll Gardens'

NEW and BETTER EVERBLOOMING HYBRID TEA ROSES

Quality and Varieties Unsurpassed

All are 2-yr., No. 1 field-grown plants guaranteed to grow and bloom this year. Please order early so that they can be shipped to you in time for early planting in your locality.

Everblooming Roses produce beautiful flowers over a long season, from about ten weeks after they are planted in spring until late frosts. Those planted in the fall produce their finest blooms early in the next summer and continue throughout the season. Practically all Everblooming Hybrid Tea Roses are fragrant at some time of the day. Most of them are hardy all over the United States if protected in winter.

From the long list of varieties in commerce we offer those that have survived the test for plant-vigor and good blooming habit in most parts of the United States.

**Any of the following, \$1.25 each;
3 of any one variety for \$3.35;
any 6 for \$6.50; any 12 for \$12.00**

UNLESS OTHERWISE NOTED

Applause. Pat. 829. Large, sparkling light red buds and well-shaped, 50-petaled flowers. Very fragrant and free blooming. \$2.00 each; 3 for \$5.00.

NOCTURNE



Our Booklet on rose growing will be sent free with your order. It tells how to prepare the soil and how to care for your roses; in fact, everything you should know about growing good roses in your garden. Mention in your order that you want a free copy, and it will be sent to you right away.

Autumn. Compact, very double flowers of burnt-orange streaked with red; moderately fragrant. Superb fall bloom.

Babe Ruth. Copper-salmon changing to rose-pink, with the petals folded back. Large and heavy petaled. Long, strong stems. Very dependable. \$2.00 each; 3 for \$5.00.

Better Times. Pat. 23. Bright cerise-pink flowers, excellent for cutting. Large and high centered. Sold in quantities by florists but is also a splendid garden variety. \$1.35 each; 3 for \$3.40.

Break o'Day. P.R.R. Orange-apricot with lighter tints. Flowers borne in large clusters; double, fragrant. Fine for bedding.

Butterscotch. Pat. 613. Very large, slightly fragrant flower of capucine-buff color. Long buds on good stems.

Caledonia. Large, very double, high-centered flower of pure white, borne singly on long, strong stem. Average plant with leathery, dark green foliage.

California. Pat. 449. Large, loose flowers of bronzy apricot with an iridescent sheen, reverse coppery pink; delicious fragrance. Healthy plants with attractive small foliage. 30 petals. \$1.50 each; 3 for \$3.75.

California Centennial. P.R.R. Long, spiral, crimson buds of elegant texture. Intensely fragrant, glowing blooms on stems 18 inches long or more. \$2.00 each; 3 for \$5.00.

QUALITY AND VARIETIES UNSURPASSED



ECLIPSE

**McGREDY'S
IVORY**

Capistrano. Pat. pending. Well-formed buds and blooms with 40 to 45 petals. Rich clear, unfading rose-pink, brighter in the bud form. Tall, shapely plant. \$2.50 each; 3 for \$6.25.

Charlotte Armstrong. Pat. 455. Warm red buds opening to cerise in hot weather. Pointed buds and long-lasting, fragrant flowers 3 to 4 inches across. \$1.50 each; 3 for \$3.75.

Christopher Stone. Bright velvety scarlet-red flowers of good form. Its golden stamens appear as the bloom opens. Damask fragrance. Vigorous, upright grower, free flowering, and does not appear to be troubled by heat.

Condesa de Sagato. Cupped flowers of fiery copper inside and rich gold on the reverse. Enticing raspberry fragrance. Vigorous plants.

Countess Vandal. Pat. 38. Long-pointed bud and high-centered, fragrant flower of coppery bronze, suffused with soft gold. Vigorous in growth and bloom. \$1.35 each; 3 for \$3.40.

Crimson Glory. Pat. 105. A beautiful crimson shaded deep red and mellowed by a velvety nap. Wonderful fragrance. Acclaimed as the best dark, velvety crimson-red Rose for the United States. \$1.50 each; 3 for \$3.75.

TALLYHO



Debonair. Pat. 677. Perfect yellow buds and high-centered flowers passing to butter-yellow. Vigorous, compact plants with very good, dark foliage. \$1.50 each; 3 for \$3.75.

Diamond Jubilee. Pat. 824. Large, very double flowers of buff-yellow. Cupped in form; fragrant. Tall and compact in growth. \$2.00 each; 3 for \$5.00.

Duquesa de Penaranda. Spectacular double flowers of cinnamon-peach color; very fragrant. Strong plants with attractive foliage.

Eclipse. Pat. 172. The very long, slender, and elegant yellow buds open to loose flowers with 25 to 30 golden yellow petals, which hold their color well. Fragrant. \$1.35 each; 3 for \$3.40.

Edith Nellie Perkins. Shapely, two-toned pink flowers produced in great abundance. Color is coppery rose outside and soft salmon-pink inside. Mildly fragrant.

Editor McFarland. Perfectly formed, fragrant flowers of clear brilliant pink, with strong stems for cutting. One of the longest-lasting cut flowers we have.

Enchantment. Pat. 737. Delicate peach-pink tinted yellow outside. Large, graceful buds with distinct fragrance; huge, double flowers. Blooms all summer. \$2.00 each; 3 for \$5.00.

Ernie Pyle. Pat. 673. Warm rose-pink suffused with yellow at base of petals. Opens slowly to cup form; long lasting. Strong, hardy plants. \$1.50 each; 3 for \$3.75.

Etoile de Hollande. Large crimson flowers with velvety finish and especially fine fragrance. Branching plants with very large, healthy foliage. One of the finest red Roses.

Forty-niner. Pat. 792. Rich chrome-yellow on the outside of petals; inside vivid Orient red turning to cherry-red. Vigorous and upright in growth. \$2.00 each; 3 for \$5.00.

Girona. Light Tyrian rose and soft golden yellow. Petals of heavy texture; rich fragrance. Fine for cutting.

Golden Dawn. Glorious double flowers of lemon-yellow, nicely formed and deliciously fragrant. Petals of bud are edged carmine. One of the healthiest plants.

Good News. Pat. 426. Full, perfectly formed, tea-scented flowers of peach-pink changing to silvery pink. Vigorous grower and constant bloomer. An extra-good Rose. \$1.50 each; 3 for \$3.75.



APPLAUSE

Heart's Desire. Pat. 501. Intensely fragrant, large, double flowers of rich crimson-red on long stems. 25 petals. \$1.50 each; 3 for \$3.75.

Hinrich Gaede. Very large and double, with raspberry fragrance. Orange-yellow with nasturtium-yellow glow.

Horace McFarland. Pat. 730. Rich orange-pink buds opening to deep apricot-pink and salmon-buff. Large blooms with 45 petals. Rich dark green foliage. \$1.50 each; 3 for \$3.75.

Joanna Hill. Cream-yellow with orange center. Very pleasing in bud form. A popular cutting variety.

Kaiserin Auguste Viktoria. Creamy buds and perfect, snow-white blooms tinted lemon-yellow at center; fragrant. Upright growth.

Katherine T. Marshall. Pat. 607. Long-pointed, coral-pink buds suffused yellow, opening to large, cupped blooms with a fruity fragrance. \$1.35 each; 3 for \$3.40.

Lowell Thomas. Pat. 595. Beautiful buds with high centers, with petals rolling outward, open to 4-inch blooms of lemon-chrome color. 25 petals. \$2.00 each; 3 for \$5.00.

Margaret McGredy. Double, cup-shaped flowers open orange-scarlet, turning a peculiar shade of carmine-rose. Blooms constantly.

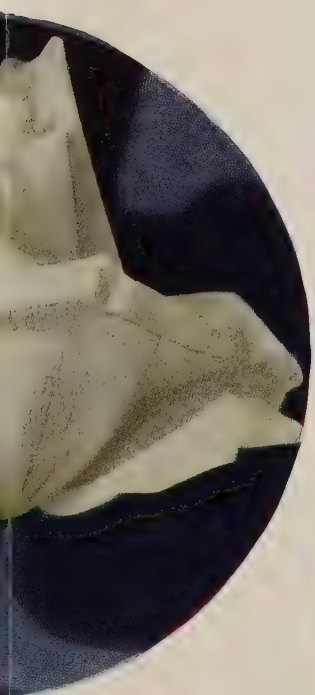
Mary Margaret McBride. Pat. 537. Large, well-formed flower with 45 shining rose-pink petals. Blooms freely all season. \$1.50 each; 3 for \$3.75.

McGredy's Ivory. A very large, full-petaled Rose of good form. Creamy white; fragrant. Large, leathery foliage.

McGredy's Scarlet. Large, loosely formed, vivid rose-red flowers. Plants are healthy and large. This Rose is not scarlet—it is red, and one of the best. Very slight Tea fragrance.

McGredy's Yellow. Unfading canary-yellow flower of excellent form with a mass of gold anthers. Plants vigorous and free blooming, with dark, glossy, holly-like foliage. A fine cup-shaped Rose of lovely, clean color.

FORTY-NINER



BABE RUTH

SPECIAL OFFER No. 5S-15

● All nine ROSES shown in color here for **\$14.25**

SPECIAL OFFER No. 5S-16

One each of three sturdy new ROSES: Babe Ruth Applause, Tom Breneman, for . . . **\$5.00**

←←←
TOM BRENEMAN

→→→
KATHARINE T. MARSHALL



©

Special Offer No. 5S-17

One each of the sixteen
Roses shown in color. . . . \$15.00



JOANNA HILL

MIRANDY



CARROLL GARDENS' NEW AND BETTER

Any of the following, \$1.25 each; 3 of any one variety for \$3.35; any 6 for \$6.50; any 12 for \$12.00, unless otherwise noted

Mirandy. Pat. 632. Maroon-red buds and blooms of good substance. Very fragrant and double. Attractive at all stages. \$1.50 each; 3 for \$3.75.

Mission Bells. Pat. pending. Beautiful deep salmon-pink blooms often 5 inches across when fully open; well formed and fragrant. Coppery foliage. \$2.50 each; 3 for \$6.25.

Mme. Chiang Kai-shek. Pat. 664. Lovely ivory buds opening to spiraled flowers of delicate yellow with creamy outer petals. 35 petals. \$1.50 each; 3 for \$3.75.

Mme. Cochet-Cochet. Pat. 129. Long-pointed, coppery pink buds flushed orange open to fragrant, cupped flowers of soft salmon-pink. \$1.50 each; 3 for \$3.75.

Mme. Henri Guillot. Pat. 337. Fragrant, urn-shaped buds of raspberry-pink becoming satiny watermelon-pink. \$1.50 each; 3 for \$3.75.

Mme. Joseph Perraud. Long, slender buds of nasturtium-orange opening to sweetly fragrant flowers of nasturtium-buff, with a hint of pale pink at the petal edges. Popular all over the country. Excellent for exhibition purposes.

Mme. Jules Bouche. Perfectly formed, long-pointed buds and high-centered flowers of pure white with a slight pink tint in the center at first; moderately fragrant. Healthy plants. A fine white Rose.

Mrs. Erskine Pembroke Thom. Pure unfading, fragrant yellow flowers of fine form. Beautiful growth. Very hardy.

Mrs. Pierre S. du Pont. One of the best of the older golden yellow Roses. Bushy plants, blooming profusely.

Mrs. Sam McGredy. Large and fragrant; coppery orange in color. Beautiful glossy bronze foliage.

Neige Parfum. Wonderful fragrance, like lemon verbena. Buds slightly tinted cream color; full white flowers. \$1.50 each; 3 for \$3.75.

New Yorker. Pat. 823. Clear brilliant red blooms of huge size and beautiful form. Hardy and disease resistant; blooms freely. \$2.00 each; 3 for \$5.00.

Nocturne. Pat. 713. Cardinal-red shaded crimson—a rich, glowing color. Large, cupped flowers, long pointed in the bud stage. Strong, upright grower. \$1.50 each; 3 for \$3.75.

Peace. Pat. 591. Very large, full flowers of soft yellow suffused and edged pink. Growth is extra strong; foliage richest dark green. See illustration in color on front cover. \$2.00 each; 3 for \$5.00.

Pedralbes. A large white Rose. Creamy before the full sleek bud unfolds, but becomes lighter until the open flower is pure white with a yellow center. Delicate airy fragrance. Plant is spreading, about 30 inches high.

Picture. Medium-sized, well-formed flowers of velvety rose-pink. An excellent variety for cutting. A free bloomer.

Poinsettia. Double flowers of a bright rich scarlet. Rich Tea fragrance.

President Herbert Hoover. Large flowers of flaming scarlet and yellow in the bud, opening to soft creamy yellow with scarlet markings. Extra vigorous plants; flowers on 2-foot stems. Very dependable.

The group at the left:

1. HINRICH GAEDE
2. ETOILE DE HOLLANDE
3. GOLDEN DAWN
4. EDITOR McFARLAND
5. MCGREDY'S YELLOW
6. CONDESA DE SASTAGO

Your Choice

The sixteen popular Roses pictured here are all priced \$1.25 each; 3 for \$3.35, except Charlotte Armstrong and Mirandy, which are \$1.50 each; 3 for \$3.75



TALISMAN



CHARLOTTE ARMSTRONG



EVERBLOOMING HYBRID TEA ROSES, continued

Radiance. Globular, cupped flowers of two-toned pink, a light silvery tone inside and deeper on outside. Vigorous, free blooming. The standard pink Rose. Deliciously fragrant.

Red Radiance. A deep rose-red sport of Radiance and exactly like its parent in everything but color; fragrant.

Rubaiyat. Pat. 758. Long buds, delicate crimson-pink outside, opening to rich crimson-red blooms. Old-Rose scent. \$1.50 each; 3 for \$3.75.

Saturnia. Pat. 349. Long-pointed buds and very large, double flowers with fruity fragrance. Bright scarlet. \$1.50 each; 3 for \$3.75.

Shades of Autumn. Pat. 542. Orange-copper and carmine shadings. One of the most beautiful color combinations yet produced in Hybrid Teas. \$1.75 each; 3 for \$4.50.

Shangri-La. Pat. 665. Open, well-formed blooms of uniform silvery pink, with intense fragrance. Very sturdy, bushy plant. 35 petals. \$1.50 each; 3 for \$3.75.

Show Girl. Pat. 646. Fragrant, semi-double, cupped flowers of deep pink, borne on long stems. Very upright and vigorous, with large foliage. Especially beautiful in the bud stage. \$1.50 each; 3 for \$3.75.

Sleigh Bells. Pat. pending. A beautiful white Rose with large, ovoid buds and immense blooms. A very free bloomer. \$2.00 each; 3 for \$5.00.

Soeur Therese (Sister Therese). Exquisite buds and semi-double, cupped flowers of golden yellow, with edges of petals spotted madder-carmine. Sweetbriar fragrance. Strong growth; good foliage.

Sonata. Pat. 732. Cochineal-red, becoming deep lively pink; the outside of the petals is darker. Large, perfectly formed. \$1.35 each; 3 for \$3.40.

Sterling. Pat. 21. Perfect-shaped, fragrant flowers of brilliant pink, which do not fade. 35 petals. \$1.50 each; 3 for \$3.75.

Sutter's Gold. Pat. 885. Bright golden yellow shaded coppery and vermilion. Very fragrant; splendid for cutting. Fine bushy plants. See illustration in color on front cover. \$2.50 each; 3 for \$6.30.

Sweet Sixteen. Pat. 631. Semi-double flowers of salmon-pink with yellow base. Fragrant; long stems. \$1.50 each; 3 for \$3.75.

Taffeta. Pat. 716. A large, semi-double bloom ranging from straw-yellow to begonia-pink. Fragrant. Blooms freely all season. \$2.00 each; 3 for \$5.00.

Talisman. Variable flowers ranging from rich scarlet and gold to deep rose and pale yellow; fragrant.

Tallyho. Pat. 828. Pink on the outside of the petals, with the outside varying from crimson to cardinal-red. Ovoid buds, opening to long-stemmed, full flowers with spicy fragrance. \$2.50 each; 3 for \$6.25.

Texas Centennial. Pat. 162. Long-pointed buds of vermilion-red on an especially tall, vigorous plant. Very strong stems. \$1.35 each; 3 for \$3.40.

The Doctor. Enormous blooms of satiny pink. A really superior pink Rose with heavy perfume.

Tom Breneman. Long, coral-rose buds open slowly to long-lasting, deliciously perfumed flowers. Vigorous plant. \$2.00 each; 3 for \$5.00.



The group at the right:

- 7. MRS. SAM MCGREDY
- 8. MRS. E. P. THOM
- 9. DUQUESA DE PENARANDA
- 10. PICTURE
- 11. CALEDONIA
- 12. MME. JOSEPH PERRAUD

FLORIBUNDA OR POLYANTHA ROSES

These are bush Roses, producing clusters of bloom without interruption from early summer until late frosts. They are all very easy to grow and exceptionally hardy. Besides using them informally in beds, plant Floribundas in the foreground of hardy shrub borders. As a hedge, they are a very fine substitute for the more common privet and barberry. Plant Floribundas 15 to 18 inches apart and prune lightly to the desired height, removing old flower clusters and thinning out dead wood. They grow 2 to 2½ feet tall.

All varieties priced at \$1.25 each are \$6.50 for any 6; \$12.00 per doz.; those at \$1.50 each are \$15.00 per doz.



PINK ROSETTE



FLORADORA

Betty Prior. Pat. 340. Outside of petals dark carmine, inside several shades lighter. Blooms are borne in large clusters on strong stems. 5 petals. \$1.25 each.

Bright Eyes. Creamy yellow clusters, borne profusely and continuously. Buds are canary-yellow, changing to silvery yellow. Fine for massing. \$1.25 each.

Cecile Brunner. The "Sweetheart" Rose with exquisite clusters of pink buds. The open flower is double, small in size and fragrant. \$1.25 each.

Chatter. Pat. 739. Bright, non-fading carmine-red. Grows 2 feet tall. \$1.25 each.

Crimson Rosette. Pat. pending. Clusters of velvety red blooms completely covering a heavily foliated, vigorous plant. Buds are of medium size, with about 50 petals. Lasts well. \$1.50 each.

Donald Prior. Pat. 377. Large clusters of red flowers on branching plants about 1½ feet high. Damask fragrance. A continuous bloomer. \$1.25 each. (Sold Out.)

Fashion. Pat. 789. Bright coral-peach color. Attractive buds and open flowers; fragrant. Bushy and vigorous. See illustration in color on front cover. \$2.00 each; 3 for \$5.00.

Floradora. Ovoid buds of pinkish orange, opening to perfect camellia-formed blooms evenly colored cinnabar-red and orange-scarlet. \$1.25 each.



Glorious. Pat. pending. Informal clusters of deep vermilion buds, opening into semi-double flowers of Tyrian rose. \$1.50 each.

Goldilocks. Pat. 672. The only true golden yellow Floribunda. The buds are ovoid, resembling Hybrid Teas in form, and rich golden yellow in color. \$1.50 each.

Margo Koster. Large individual blooms in clusters; orange-red. \$1.25 each.

Ming Toy. Small, double, fragrant blooms in clusters; deep rose-pink. \$1.50 each.

Pink Gruss an Aachen. Large, light flesh-pink and salmon-yellow flowers, fading lighter. \$1.25 each.

Pinkie. Pat. 712. Cupped, pink flowers of unusual charm. Dwarf, bushy plant that blooms in greatest profusion. \$2.00 each; 3 for \$5.00.

Pink Rosette. Pat. 902. Open sprays of peach-pink buds opening to perfect form. Keeps well when cut. \$1.50 each.

Pinocchio. Pat. 484. Pink suffused with golden salmon. Beautiful buds and flowers on long sprays; splendid for corsages and bouquets. \$1.25 each.

Red Pinocchio. Pat. 812. Velvety deep red flowers in large, long-lasting clusters. \$1.50 each.

Rose Elfe. Rose-pink, like miniature Hybrid Teas. Continuous blooming. \$1.25 each.

World's Fair. Pat. 362. Velvety black-scarlet flowers in large heads nearly 4 inches across. 18 to 20 petals; fragrant. Hardy. \$1.25 each.



GLORIOUS

BRIGHT EYES

Offer No. 5S-18

5 plants,
1 each of these

5 ROSES

shown in color for

\$6.25

Offer No. 5S-19

5 ROSES

Not illustrated

Goldilocks
Margo Koster
Pinocchio
World's Fair
Pink Gruss an Aachen

1 of each for

\$5.75



RED PINOCCHIO

LARGE - FLOWERED HARDY CLIMBING ROSES

These are reliable, hardy varieties that can always be depended upon to give a brilliant show in late May, June and July, depending upon the locality. Such varieties as Dream Girl, New Dawn, Dr. J. H. Nicolas, and Blaze often repeat throughout the summer. They are excellent all over the country for training on fences, trellises, porches, etc.

Blaze. Pat. 10. Huge clusters of vivid scarlet. Everblooming when well established. \$1.50 each.

City of York. An attractive creamy white climber, blooming profusely and making a fine showing. \$1.50 each.

Climbing American Beauty. Very large, fragrant, deep rose-pink. An abundant June bloomer. \$1.25 each.

Climbing Break o' Day. Pat. 696. Very large, fully double, apricot-pink flowers. Everblooming. \$2.00 each; 3 for \$5.00.

Doubloons. Pat. 152. A very good yellow climber. Large, double, rich gold flowers on strong stems. \$1.50 each.

Dream Girl. Pat. 643. Apricot, coral and pink blooms on long stems. Very spicy scent. Glossy foliage on a vigorous plant. \$2.00 each; 3 for \$5.00.

Dr. J. H. Nicolas. Pat. 457. Immense, double, rosy pink blooms. A strong pillar Rose growing 8 feet tall. \$1.50 each.

Dr. W. Van Fleet. Beautiful cameo-pink blooms on long, strong stems. Will cover a large surface; dark, glossy foliage. One of the foremost climbers. \$1.25 each.

Golden Climber (Mrs. Arthur Curtiss James). Pat. 28. Large, double, yellow. \$1.75 each; 3 for \$5.00.

Golden Glow. Pat. 263. Very fragrant, cadmium-yellow clusters. Very vigorous and free blooming. \$1.75 each; 3 for \$5.00.

King Midas. Pat. 586. Semi-double, clear yellow flowers intermittently produced. \$1.50 each.

Mary Wallace. Very large, semi-double, warm rose-pink blooms; fragrant. A famous doorway Rose. \$1.25 each.

New Dawn. The everblooming form of Dr. W. Van Fleet. Soft pink. \$2.00 each; 3 for \$5.00.

Paul's Scarlet Climber. The most widely planted scarlet climber. Hardy and easy to grow. Makes a spectacular show in June. \$1.25 each.

Silver Moon. Large, creamy white flowers with yellow stamens and glossy foliage. A profuse bloomer. \$1.25 each.

Spanish Beauty. Queen of the pink climbers. Large, fragrant flowers stained crimson outside. \$1.25 each.



BLAZE



DREAM GIRL

PEACE Rose, like Crimson Glory, has given such pleasure and satisfaction to so many thousands of Rose growers all over the country that its very name has become a byword for perfection. It has won more prizes than any other Rose in history. Now a climbing sport is offered, with all the good points of the parent plus a strong everblooming climbing plant. The soft ivory-yellow, pink-flushed blooms are perfect for cutting. Don't overlook Climbing Peace in your search for a topnotch climber.

EVERBLOOMING CLIMBING HYBRID TEA ROSES

These beautiful everblooming climbers are very satisfactory for warmer sections of the country, but we do not recommend them for colder localities unless you are willing to experiment with them and see what they will do for you. They are certainly worth some extra care in the way of winter protection. These are identical with the bush forms and bloom continuously all summer and fall. If you live in the Southern States or in the warm Western States, you should certainly try some of them.

Climbing Cecile Brunner. The lovely Sweet-heart Rose in climbing form. \$1.25 each.

Climbing Christopher Stone. Pat. 626. Scarlet. \$1.25 each.

Climbing Condesa de Sastago. Scarlet and gold. \$1.25 each.

Climbing Crimson Glory. Pat. 736. Velvety crimson. \$2.00 each; 3 for \$5.00.

Climbing Dainty Bess. Large, single; dainty pink. \$1.25 each.

Climbing Etoile de Hollande. Crimson-red. \$1.25 each.

Climbing Heart's Desire. Pat. 663. Rich crimson-red. \$1.50 each.

Climbing K. A. Viktoria. White. \$1.25 each.

Climbing Mrs. E. P. Thom. Clear yellow. \$1.25 each.

Climbing Peace. Pat. pend. Yellow, pink edges. \$2.00 each.

Climbing Picture. Pat. 524. A splendid pink. \$1.25 each.

Climbing Pink Radiance. Pink. \$1.25 each.

Climbing Pres. Hoover. Flaming scarlet and yellow. \$1.25 each.

Climbing Red Radiance. Rose-red. \$1.25 each.

Climbing Snowbird. White. \$1.25 each.

Climbing Talisman. A striking bicolor. \$1.25 each.

Climbing Texas Centennial. Pat. 565. Carmine-red. \$1.50 each.

Gold Rush. Golden yellow. \$1.50 each.

Mermaid. Large, single; yellow. \$1.50 each.

Anyone who has grown CRIMSON GLORY and marveled at its glorious, richly colored and fragrant blooms will be delighted to have the climbing form of this wonderful Rose. The strong everblooming plant makes a picture not easily forgotten. If you have a square foot of space to spare, you should have it in your garden.



CLIMBING
PRES. HOOVER



GOLDEN
CLIMBER



Lovely Tree Roses with Floribundas growing at the base.

Lovely TREE ROSES

Plant Tree Roses as accents in Rose beds, at either side of steps, in the perennial or annual flower border to relieve flatness, in the shrub border to prolong color. There are many spots in every garden that can be improved by the use of one or more Tree Roses.

These well-formed Tree Roses will bloom the first summer after spring planting, like the bush Hybrid Teas.

Patented Varieties \$5.50 each

- Charlotte Armstrong.** Cerise.
- Countess Vandal.** Salmon-pink.
- Crimson Glory.** Deep crimson-red.
- Eclipse.** Long yellow buds.
- Forty-niner.** Chrome-yellow and red.
- Goldilocks.** Golden yellow.
- Mirandy.** Maroon-red.
- Peace.** Yellow-rose.
- Picture.** A splendid pink.
- Pinocchio.** A popular pink.
- Pink Rosette.** Full double; pink.

Standard Varieties \$5.00 each

- K. A. Viktoria.** A popular white.
- Mrs. E. P. Thom.** Pure yellow.
- Pres. Herbert Hoover.** Scarlet and yellow.
- Snowbird.** White.
- Talisman.** Gold, scarlet and yellow.
- Tallyho.** Crimson-pink.
- The Doctor.** Very large; clear pink.

HYBRID PERPETUAL or JUNE ROSES

In this class large flowers, fragrance, disease resistance, and strong growth are outstanding features. While most varieties bloom only in June and July, many will repeat throughout the summer and fall.

Hybrid Perpetuals spaced 2½ to 3 feet apart can be grown as bedding Roses at a height of 3 to 4 feet, or allowed to grow into shrubs up to 6 feet tall. A few of the most vigorous can be trained as pillars, giving wonderful displays of bloom in June and July. They also make fine specimen plants on the lawn. If wanted for bedding, prune to 15 to 18 inches; for shrubs, 2 feet or over. For a pillar Rose, allow the plant to grow as tall as desired, then cut out only dead wood or enough to keep the bush within bounds.

Any of the following, \$1.25 each; 3 for \$3.50; 6 for \$6.50; 12 for \$12.50

American Beauty. Pink shaded smoky carmine; deliciously fragrant. 50 petals.

Frau Karl Druschki. Magnificent snow-white blooms. Repeats freely. The most popular white Rose. 35 petals.

General Jacqueminot. Scarlet-crimson buds and clear red flowers; intensely fragrant.

Paul Neyron. Dark lilac-rose of immense size; remarkable fragrance. 50 petals.

MINIATURE ROSES

These petite yet sturdy Roses make fairy-land a reality. The wee green buds expand into lovely little blooms of thumb-nail size. They are intriguing little plants, 6 to 8 inches tall, with tiny rich green leaves. A half-dozen plants will provide a continuous supply of flowers from May until frost for miniature arrangements. Plant them around a pool, in the rock garden, as a narrow border for Rose beds. Fine, too, for window and porch boxes. Care for them as you would Hybrid Teas.

All are sturdy 3 in. pot plants

Pixie. Pat. 408. The world's tiniest, fully double white Rose. Forty or more dainty petals. Buds sometimes touched pink. 75c each; 3 for \$1.90; 12 for \$7.50; 25 for \$13.75.

Red Elf. Pat. pending. Velvety Bordeaux red. Graceful habit, vigor and profusion of blooms make it a worthy companion for the other miniatures. \$1.25 each; 3 for \$3.15.

Rouletti. Demure, bright pink, double flowers 1½ inches across when fully open. Rediscovered growing in pots on the window ledge of a cottage in Switzerland. 75c each; 3 for \$1.90; 12 for \$7.50; 25 for \$13.75.

Sweet Fairy. Pat. 748. The first of the miniatures with rich Rose fragrance. Deep pink buds opening to very double, 1-inch blooms of apple-blossom-pink. Stems long enough for bouquets. \$1.25 each; 3 for \$3.15.

Tom Thumb. Pat. 169. A trim little plant, erect and well filled out. Urn-shaped, deep crimson blooms with a generous touch of white at the base of the petals. 75c each; 3 for \$1.90; 12 for \$7.50; 25 for \$13.75.

SPECIAL OFFER No. 5S-20: 5 plants, 1 each of the 5 Miniature Roses, \$4.50.

SPECIAL OFFER No. 5S-20A: 15 plants, 3 of each, \$11.75.



© RED ELF. Pat. pending



© PIXIE. Pat. 408



© SWEET FAIRY. Pat. 748



TOM THUMB. Pat. 169

Fruits FOR THE HOME GARDEN



Strawberries

CULTURE. Strawberry plants may be set as close as 2 feet apart in the row and the rows 3 or 3½ feet apart to allow for easy cultivation. At a planting distance of 2 by 3½ feet, 6,300 plants will be required for one acre. Do not plant too deep. The crown of the plant must be above the level of the ground and the soil carefully firmed around each plant. Shallow cultivation is important. Many growers mulch the plants with straw during the winter. This is applied late in the season when the ground is frozen, and may be left on in the spring.

25 of any one variety for \$1.75; 50 for \$2.75; \$4.25 per 100; 250 for \$8.75; except where noted. Not less than 25 of one variety are sold.

Planting Instructions sent with each order

Streamliner. New jumbo-size everbearing Strawberry, glossy red and delicious throughout the season. Production of fruit begins in June and extends until hard freezing weather. This is the ideal everbearer for your garden and one of the best for quick freezing. 25 for \$2.75; 50 for \$4.75; 100 for \$7.75.

Gemzata Everbearing. Outstanding for high quality and heavy production throughout the late spring summer and fall. Extra large Strawberries up to heavy freezing time. Berries unusually large, with rich red meat, firm and of fine texture. Gemzata has proved successful on a wide range of soils and succeeds better under adverse conditions than other everbearers we have tested. 25 for \$2.50; 50 for \$4.25; 100 for \$6.75; 250 for \$13.50.

Robinson. The new medium late Robinson (Scarlet Beauty). Finest June-bearing berry to date. Very firm and glossy. Heavy producer. Delicious for table and preserving.

Ambrosia. One of the largest and latest. The berries are sparkling bright red, uniform, semi-pointed shape. Delicious flavor. Ripens three weeks later than other varieties.

Blakemore. Extra-early, bright red berries; perhaps the best shipping variety. Enormous quantities of fine quality fruit. In great demand by packers; ideal for cold packing. A most satisfactory berry for general planting, especially in the South.

Majestic. Pat. 345. The best of the newer June-bearing varieties for home use; easily grown, large berries, deep scarlet-red to the core. Adapted to a wide variety of soils and climates. High sugar content makes it fine for table and canning. Extremely hardy. Recommended for quick freezing.

Premier. This very early standard variety is still one of the most widely planted. Very healthy. An excellent producer of large, bright red berries. For home use or commercial sales.

Fairfax. Its sweet flavor and darkest red color make it a favorite for the home and roadside stand. Ripens in midseason and has a long season.

Dunlap. An old standby. Berries are medium size, dark red, pointed. Fruit is highly flavored and ideal for canning. Resists drought and cold weather better than most varieties.

Special All-Season Strawberry Collection

Robinson (late) **Fairfax** (midseason)
Premier (early) **Gemzata** (everbearing)

OFFER No. 5S-21

100 plants, 25 each of the above 4 varieties,
\$5.75

OFFER No. 5S-21A

200 plants, 50 of each . . . \$9.50

Blueberries

GROW YOUR OWN BLUEBERRIES—
PICK THEM FRESH OFF THE BUSH

Every home garden has room for at least a few of those plants. It takes only a few to produce all the berries a family will need. As a commercial proposition it is one of the most profitable fruits to grow. You can begin picking the second or third season after planting.

Blueberries are also ornamental shrubs of rare beauty. Plant them in rows, in clumps on the lawn, or in the shrubby border. A hedge of Blueberries is both profitable and ornamental.

Choose a piece of ground easily supplied with moisture during dry summer months; it should not, however, at any time become water-logged. Plant in full sun if possible, or in partial shade. Be sure the soil is acid; plenty of well-rotted manure mixed in it will give good results. Give shallow cultivation, not over 2 to 3 inches deep.

New Blueberries

Cabot. The earliest variety to fruit. Plants seldom exceed 3 feet in height, making a broad, low bush. Delicious subacid flavor.

Concord. Of upright habit, at maturity exceeding 6 feet in height. The berries are large.

Jersey. Very large and vigorous in habit. The light blue berries are very large.

Ranococas. Slender, vigorous, upright habit, rarely surpassing 5 feet in height. The berries are earlier and larger than Rubel.

Rubel. Well-developed bushes 6 feet or more high. Large berries of fine blue color. Ripens about two weeks later than Cabot.

Stanley. New. Most delicious. Produces good yields of large berries in midseason. Upright.

3-year-old plants, 12 to 18 in. high, any 3 for \$4.50; 12 for \$16.50

OFFER No. 5S-22: 6 plants, 1 each of the above 6 varieties for \$7.25

A Few Choice Hardy Garden Lilies for Spring Planting

For a complete list and cultural instructions, see our 1949 Fall Catalog.

All bulbs are large size, sure to bloom well this next summer

AURATUM. Twenty or more huge trumpet flowers; hardy and stately. White spotted red, with bright yellow band on each petal. 3 to 6 ft. August. 3 for \$3.00; 6 for \$5.50; \$1.10 each.

ESTATE. A magnificent new Lily for midsummer. Extra large, pure white flowers freely produced on 4-foot stems. Plant the bulbs 6 to 8 inches deep in average soil. Large blooming-size bulbs, 3 for \$2.00; 6 for \$3.75; 75c each.

REGALE. Gorgeous, bell-shaped, white flowers with a touch of canary-yellow in the throat and a shading of lilac-pink on the outside. One of the most beautiful and easily grown Lilies. July. 3 for \$1.25; 6 for \$2.25; 12 for \$4.25.

SPECIOSUM RUBRUM. Frosted white, suffused rose-pink and spotted crimson. August, September. 3 for \$2.00; 6 for \$3.75; 75c each.

UMBELLATUM, ORANGE TRIUMPH. Orange shading to crimson at tips. 3 for \$2.75.

Beautiful New Hardy Lilies

BELLINGHAM HYBRIDS. A desirable new strain, highly recommended for cutting. The pyramidal heads bear up to twenty blooms; if cut as the first buds open, they will remain fresh until the entire cluster is in bloom. The color range is complete, from clear yellow to yellow-orange to bright orange-red with scarlet-tipped petals. Most of the flowers are interestingly spotted with brown or reddish brown. Ideal for partial shade. Plant the bulbs 5 inches deep in ordinary light soil. A winter mulch is advisable in the coldest sections. 3 for \$2.00; 6 for \$3.75; 12 for \$7.00; 75c each.

CENTIFOLIUM, OLYMPIC HYBRIDS. Vigorous plants, with well-placed flowers of excellent form, in pleasing variations and shades from pure white to fuchsia-pink. They come into bloom after the Regal Lilies, during July. Plant the bulbs 5 to 6 inches deep in well-drained soil. 3 for \$1.50; 6 for \$2.75; 12 for \$5.00; 60c each.

The Popular Madonna Lily

Order now for Delivery in Late August and Early September.

Lilium candidum. Fragrant, snow-white flowers on stout stems 4 feet tall in June. Can be planted only in the fall, preferably September. Bulbs are shipped in August and September. Order now. Large blooming-size bulbs. 3 for \$1.75; 6 for \$3.25; 12 for \$5.75.

Madonna Lily, New Cascade Strain

This new hybrid strain of Madonna Lily is disease free, with straight long stems and large flowers of unusual texture and perfect form. Plant in well-drained soil, only about an inch deep. See color illustration on page 10. 3 for \$2.00; 6 for \$3.75; 12 for \$7.00; 75c each. **Please order early.**

OFFER NO. 5S-23

10 BEAUTIFUL LILY BULBS

2 each of 5 varieties (packed in a box)
for only \$3.00

Only a Few Available—Order Early

Watch for Carroll Gardens' Outstanding Collection of Hardy Garden Lilies to be Featured in our Fall Catalog

VINES

Climbing vines are excellent for many uses around the home grounds, such as on porches, trellises, arbors, pergolas and posts, for clambering up old tree trunks, for ground covers and for sprawling over rocks.

Large-flowering Clematis

A partially shaded location suits Clematis best. If it is grown in the sun, a few small plants to shade the lower stems and roots will help to keep the ground cool and moist. A summer mulch of peat moss or spent hops may be used to advantage. Clematis thrives best in well-drained, rich garden loam of rather light texture. Sand and peat moss may be mixed with heavy soil to loosen it, and a little lime should also be added. Set the collar of the plant at least 2 to 3 inches below the surface of the soil. Firm the soil well around the roots and water thoroughly.

Duchess of Edinburgh. Double, pure white. 8 to 10 ft. Early summer. \$1.00 each; 3 for \$2.75.

Jackmani. Rich purple. 10 ft. Summer and early autumn. \$1.00 each; 3 for \$2.75.

Jackmani rubra, Crimson Star. Rich red. \$1.20 each; 3 for \$3.25.

Mme. Baron-Veillard. Large lavender flowers. 10 to 12 ft. Summer to frost. \$1.00 each; 3 for \$2.75.

Mme. Edouard Andre. Rosy carmine. 7 ft. \$1.00 each; 3 for \$2.75.

Nelly Moser. Red bars accentuate pale mauve petals. 10 to 12 ft. \$1.20 each; 3 for \$3.25.

Ramona. Lavender-blue. \$1.00 each; 3 for \$2.75.

Ville de Lyon. Carmine-red. 8 to 10 ft. July to Sept. \$1.00 each; 3 for \$2.75.

Small-flowered Clematis, Paniculata. Sweet-scented Autumn Clematis. Pure white. Late summer 65c each; 3 for \$1.65.

Other Vines

These are all easy to grow in full sun or partial shade in any average garden soil.

AMPELOPIS Veitchii. Boston Ivy. Glossy green leaves turn scarlet in fall. Clings very well to brick or stone walls. 75c each; 3 for \$2.00.

BITTERSWEET (Celastrus scandens). Grown as a vine or large shrub. The brilliant berries are useful for indoor decoration. 75c each; 3 for \$2.00.

NEW HONEYSUCKLE (Lonicera), Goldflame. Flame-pink, yellow inside. 75c each; 3 for \$2.00.

SILVER LACE VINE (Polygonum Auberti). White sprays of flowers completely cover plant in late summer and early fall. 75c each; 3 for \$2.00.

LONG-CLUSTERED WISTERIA (Wisteria multi-juga). Long clusters to 18 to 24 inches in length.

Rosea. Pink. **Alba.** White. **Purpurea.** Purple.

Any of above Wisteria, \$1.25 each; 3 for \$3.50

EVERGREEN SHRUBS

ABELIA (Bush Arbutus)

Plant in ordinary soil, in sun or partial shade.

Grandiflora. 4 ft. Useful in foundation plantings and mixed with other shrubs and evergreens. Flowers are white, flushed pink. Glossy evergreen foliage. Blooms from June to November. Small plants, 50c each; 3 for \$1.25; 12 for \$4.00.

Edward Goucher. 18 to 24 in. Lavender-pink flowers. A continuous bloomer. Nice 3-in. pot plants. 75c each; 3 for \$2.00.

AZALEA

We are proud of the Azaleas we offer this year. They are the finest in quality and variety, and at reasonable prices too. All reach about the same height at maturity—2½ to 3½ feet. Azaleas require acid soil and prefer a partly shaded location. They are not recommended for cold areas, let's say colder sections than Long Island, N. Y. See color illustration on page 29.

Coral Bells. Coral-pink, deeper in center.

Corsage. Large single, orchid-lavender.

Gibiyama. Lovely light lavender. Available in 2-yr. plants only.

Hinodegiri. The popular brilliant red.

Pink Pearl. Large double blooms of pale pink.

Salmon Beauty. Showy salmon-pink.

Snow. Pure white.

Sweetbrier. Free-blooming rose-pink.

Any of the above, bushy 2-yr. plants, \$1.00 each; 3-yr. plants, \$1.50 each; 4-yr. plants, \$2.00 each

SPECIAL OFFERS

Any six 2-yr. plants - \$5.00
Any six 3-yr. plants - \$8.00
Any six 4-yr. plants - \$11.00

BERBERIS (Evergreen Barberry)

Verruculosa. Warty Barberry. 3 ft. A semi-dwarf, slow grower with dark glossy green leaves, whitish beneath. Flower primrose-yellow. 3-in. pot plants, 75c each; 3 for \$2.00.

ENGLISH BOXWOOD

Buxus suffruticosa (nana). The true dwarf English Boxwood used for hedging. Bushy plants 4 to 6 inches high, 6 for \$2.75; 12 for \$5.00; 25 for \$9.50; 50 for \$17.50; \$32.50 per 100.

COTONEASTER (Rock Spray; Quinceberry)

Plant in ordinary soil in sun or part shade.

Apiculata. 2-3 ft. Cranberry Cotoneaster. A fine deciduous form. Foliage dull bronze in fall, then dark crimson. Extra-large red berries.

Dammeri (humifusa). 8 in. A creeping shrub for the rockery. A perfect prostrate species with bright evergreen foliage and coral-red berries.

Salicifolia. Willow-leaf Cotoneaster. 5 ft. Evergreen, graceful, drooping branches. White flowers in May and June; red fruit in fall.

Any of the above Cotoneasters, strong 3-in. pot plants, 75c each; any 3 for \$2.00

DAPHNE (Garland-Flower)

Cneorum. 10 in. Fragrant pink flowers in clusters on a spreading evergreen shrub. Plant it in well-drained, light soil in a sunny spot. 1-yr. plants, 65c each; 3 for \$1.65; 12 for \$6.00.

ERICA (Heath)

These plants do best in full sun. If the soil is heavy, mix liberal amounts of sand and peat moss in it at planting time.

Carnea rosea. These miniature shrubs, seldom more than 8 inches high, are covered with rosy pink flowers in March and April. Hardy, free blooming, and excellent in the rock garden. 1 and 2-yr. young plants, 60c each; 3 for \$1.50; 12 for \$5.00.

Carnea, Springwood. A lovely white form of the above. 60c each; 3 for \$1.50; 12 for \$5.00.



Weigela, Bristol Ruby

CHINESE HOLLY

Ilex cornuta Burfordi. 6 to 8 ft. Glossy evergreen foliage; large, orange-red berries all winter. White flowers in the spring. Recommended for warmer areas; hardy in Maryland. Plant in sun or part shade. Nice 3-in. pot plants, \$1.25 each

AMERICAN HOLLY. See page 29.

PYRACANTHA

Coccinea Lalandi. 8 ft. Beautiful evergreen shrub covered with white flowers in early spring, followed by bright orange berries nearly all winter. Full sun and any ordinary soil suits it. See color illustration on page 29. Nice pot plants, 75c each; 3 for \$2.00.

DECIDUOUS SHRUBS

All shrubs listed here do best in a sunny location in ordinary garden soil.

AZALEA

Mollis. Large masses of yellow and apricot bloom in spring on 3 to 4-foot plants. Deciduous; hardy and dependable. May be planted in sun or part shade. See color illustration on page 29. Mixed shades only. Sturdy, 3-yr. plants, 8 to 12 in., \$1.00 each; 3 for \$2.75; 6 for \$5.00.

BUTTERFLY BUSH. See page 30.



Potentilla fruticosa Purdomi

The size following the variety name indicates approximate height at maturity.

CALLICARPA (Beauty Berry)

Purpurea. 5 ft. Gracefully branched; small, tinted flowers in August. Violet-purple berries. 75c each; 3 for \$2.00.

CARYOPTERIS (Blue Spirea)

Blue Mist. 3-4 ft. Clusters of powdery blue fringed flowers, August to frost. Perfectly hardy. 75c each; 3 for \$2.00; 12 for \$7.50.

CLETHRA alnifolia rosea. See page 30.

CYDONIA (Flowering Quince)

Japonica. Brilliant red flowers cover the branches. The bush grows 5 to 6 feet in height and as much across at maturity. Spectacular early spring bloom. 18 to 24 in., \$1.50 each; 3 for \$4.00.

FORSYTHIA

Spring Glory. 6 to 8 ft. *New.* Large, pale yellow flowers completely cover the branches. See color illustration on page 29. 75c each; 3 for \$2.00.

FRANKLINIA alata. See page 29.

HYPERICUM (St. Johns-Wort)

Moserianum. 18-24 in. Large, golden yellow all flowers summer. A hardy shrub, easily grown. 50c each; 3 for \$1.25; 12 for \$4.00.

FRENCH LILAC

See color illustration on page 29

Congo. Single red.

Marie Legraye. Single; white.

Mme. F. Morel. Single; deep pink-lilac.

Mme. Lemoine. Double; white.

Pres. Grevy. Double; lilac-pink.

Pres. Poincare. Double; clear red-purple.

Any of the above, nice well-developed, 2 and 3-yr. plants, 18 to 24 in. high, \$1.50 each; any 3 plants for \$4.00; any 6 plants for \$7.50.

MAGNOLIAS. See page 31.

POTENTILLA

Fruticosa Purdomi, Lemon Drops. A small shrub 2 feet high, blooming continuously from May to September. Excellent for the rock garden or in front of taller-growing shrubbery. Bright sulphur-yellow blooms. 75c each; 3 for \$2.00; 12 for \$7.50; \$50.00 per 100.

PRUNUS

Triloba. A showy, ornamental shrub covered with double pink flowers on slender branches in spring. Reaches a height of 6 to 8 feet. Nice plants, 2 to 3 ft. high, \$1.50 each; 2 for \$2.75.

JAPANESE SNOWBALL

Viburnum plicatum. 6 to 8 ft. Showy white flowers in balls. Blooms in June. Handsome foliage with purple autumn coloring. Strong, bushy, 12 to 18-in. plants, \$1.25 each.

VIBURNUM

Burkwoodi. 6 to 8 ft. Outstanding new shrub. Flower-heads unusually large and deliciously fragrant. Makes a fine specimen plant. See color illustration on page 29. 8 to 12-in. plants, \$1.00 each; 3 for \$2.50.

VITEX macrophylla. See page 30.

WEIGELA

Bristol Ruby. Pat. 492. Just about the most attractive flowering shrub you could plant. Covered in June with a wealth of ruby-red blossoms, it continues flowering at intervals all through the summer. Bristol Ruby grows to a height of 7 to 8 feet but can be pruned lower if desired. Flowering well on old wood, little or no pruning is necessary; it is naturally shapely. Nice plants, 12 to 18 in. high, \$1.25 each; 2 for \$2.35; 3 for \$3.25; 6 for \$6.00.



AZALEAS. See page 28



AMERICAN HOLLY

AMERICAN HOLLY

A well-known native American tree with handsome evergreen foliage and showy red berries from early fall to the following spring. It grows in ordinary soil in sun or partial shade. The variety we offer is a selected form propagated from female, berry-bearing trees. Strong; sure to grow. 3-in. pot plants, 8 to 10 in. high, \$1.25 each; 2 for \$2.25; 3 for \$3.25.

Male variety, same size and price as the female. Unless there are Holly trees growing in some of your neighbors' gardens, it is best to plant both female and male.

SPECIAL OFFER No. 55-27: 1 each of male and female Holly, \$2.25.



PYRACANTHA coccinea Lalandi

75c each
See page 28.



FORSYTHIA, Spring Glory

75c each. See page 28



FRENCH LILAC. See page 28.



FRANKLINIA alatamaha

FRANKLINIA alatamaha

15 ft. Short-stemmed, very fragrant, white flowers. Foliage glossy green, turning scarlet in the fall. Blooms from mid-August until frost. Prefers rather light soil and a sunny location. Strong, sure-to-grow pot plants, 12 in. or more high, \$1.65 each; 2 for \$3.00.



VIBURNUM Burkwoodi. \$1.00 each. See page 28



AZALEA mollis. \$1.00 each. See page 28.

Shrubs for Summer Bloom

Outstanding BUTTERFLY BUSHES (Buddleia)

BUDDLEIA
Royal Red

These shrubs are easy to grow in any soil in a sunny location. They bloom all summer. The plants should be cut down to the ground every year in early spring.

Any of the following, 75c each; any 3 for \$2.00; any 6 for \$3.75; any 12 for \$7.00.

Daybreak. A lovely new variety of delicate lavender-pink.

Empire Blue. Pat. 557. Deep blue with a delicate lilac tone.

Fascination. A hybrid of dainty coloring.

Ile de France. Bright rosy purple, suffused violet. Blooms freely.

Orchid Beauty. Well-formed spikes of bloom; delicate fragrance.

Royal Red. Pat. 556. The closest approach to red yet achieved in Buddleias.

White Cloud. A new white Butterfly Bush of our own origination—a truly magnificent shrub. It grows 4 to 5 feet high and develops into a very symmetrical and compact bush, producing hundreds of well-formed, pure white blooms with tiny bright yellow eyes. It is perfectly hardy, a very free bloomer and a vigorous grower.

5 Finest Butterfly Bushes

To give you bloom all summer

Empire Blue
Fascination

Royal Red
White Cloud

Orchid Beauty

5 plants, 1 each of above varieties
for only . (Value \$3.75) \$3.00

ASK FOR OFFER NO. 5S-28

*DON'T OVERLOOK BLUE SPIREA AND POTENTILLA,
LEMON DROPS*

These two excellent, low-growing shrubs are offered on page 28.



CLETHRA alnifolia rosea
(The rare pink Sweet Pepperbush)

CLETHRA

(Sweet Pepperbush)

Alnifolia rosea. Tall spikes of foamy pink flowers on a handsome shrub covered with rich green leaves. Blooms late in summer. Nice strong potted plants, \$1.75 each; 3 for \$4.75.



CRAPE MYRTLE, William Toovey

CRAPE MYRTLE, William Toovey

The finest of all Crape Myrtles. Neat and compact in growth, with a mass of beautiful deep watermelon-red flowers in large heads. A prolific bloomer of a most arresting color. Will reach a height of 15 feet at maturity. Nice plants, 18 to 24 in. high, \$1.50 each; 2 for \$2.75; 3 or more at \$1.25 each.

Other Crape Myrtles in Separate Colors

Pink

Red

White

\$1.25 each; one each of the 3 colors for \$3.25

PLEASE NOTE—Crape Myrtle can be grown successfully in Maryland and southward in other warm parts of the country. North of Maryland they may be tried with winter protection.



BUDDLEIA
Fascination



VITEX macrophylla (Chaste Tree)

VITEX

(Chaste Tree)

Macrophylla. 5 ft. Spikes of lavender-blue flowers. June to September. \$1.00 each; 3 for \$2.75.

ARISTOCRATS in Flowering Trees and Shrubs



PINK DOGWOOD (*Cornus florida rubra*)

To do their best, all plants listed on this page need to be grown in a sunny location, except Pink Dogwood, which can stand light shade.

FLOWERING CRAB Floribunda

Completely covered with pink flowers in spring, followed by small yellow fruit in late summer and fall. A beautiful and showy small tree. Height at maturity, 15 to 25 feet. Nice, well-developed trees, 4 to 5 ft. high, \$2.85 each; 2 for \$5.50.



JAPANESE RED-LEAF MAPLE

Not Illustrated

A small tree popular as a lawn specimen. Reaches a height of 12 to 20 feet at maturity. Nice 3-yr. plants, 12 to 18 in. high, \$3.00 each; 2 for \$5.75.

FLOWERING CRAB Floribunda Blooms

Fruit of  Flowering Crab



PINK DOGWOOD (*Cornus florida rubra*)

Everybody's favorite. Beautiful planted at the edge of woods or as a specimen on the lawn. We are fortunate to be able to offer this spring nice young, well-developed trees, 2 to 3 ft. high, \$3.25 each; 2 for \$6.25; 3 for \$8.75.

PURPLE-LEAF PLUM, Newport

Not Illustrated

A handsome, semi-dwarf ornamental tree with bright bronzy red leaves, pink flowers and small red fruit. Grows 8 to 10 feet tall. Nice, well-developed trees, 4 to 5 ft. high, \$2.50 each; 2 for \$4.25.

SWEET BAY MAGNOLIA

(*Magnolia glauca*) *Not Illustrated*

Not as showy as other Magnolias but produces large, sweet-scented, creamy white blooms sparingly from June to August. Glossy foliage of rather grayish appearance. In the South this is evergreen; in other places it sheds its leaves in winter. Makes an attractive ornamental shrub and grows 8 to 12 feet high. Prefers a moist location, although good specimens can be grown in average garden soil. Nice 3-in. potted plants, about 12 in. high, 95¢ each; 3 for \$2.00.

WATER-LILY MAGNOLIA

(*Magnolia stellata rosea*)

Not illustrated

The earliest Magnolia to bloom. Lovely, star-shaped, pale pink flowers on compact plants. Grows to 6 to 8 feet in height and as much across. 3-in. potted plants, \$1.50 each.



JAPANESE FLOWERING CHERRY (*Kwanzan*)

A most attractive small tree. The flowers are large, double, deep pink. Grows 15 to 25 feet tall. Nice, well-developed young trees, 3 to 4 ft. high, \$3.00 each; 2 for \$5.50.

LILY MAGNOLIA (*Magnolia liliflora*)

Large shrub or small tree. Grows to 12 to 18 feet in height at maturity. Large flowers in April and May, reddish purple on outside and white inside. 3-in. potted plants, about 10 to 12 in. high, \$1.50 each.



Carroll Gardens' finest **HARDY**

In the following eight pages you will find listed one of America's finest collections of Hardy Chrysanthemums of all types

Hardy Chrysanthemums are among the most dependable flowers in the autumn garden, providing glorious color and spicy fragrance from early September (August with some varieties) until heavy frost.

There are Chrysanthemums of many types, from the Cushion Mums for low mounds of color in borders and rock gardens, to the long-stemmed kinds for cutting.

We feel that we have one of America's finest and most up-to-date Chrysanthemum collections. Our list includes selected varieties from the University of Minnesota, University of Chicago, and Bristol collections, and from several other sources in different parts of the country, including some of our own introductions.

Due to lack of space, we are listing only the most important varieties that we have. Many other sorts are available. Write us if you are interested in them.

CULTURE. Chrysanthemums will grow in any good average garden soil which has been enriched with manure or good commercial fertilizer. Plant them 15 to 18 inches apart. Cultivate the soil between them, particularly while they are in the young stage. You can pinch the plants up to July 15 if they are tall and spindly. Don't pinch any more after that date. Hardy Chrysanthemums do best if grown in full sun. If they are planted in the shade, they will grow too tall, have weak stems, and produce inferior blooms.



SPECIAL SAVING

OFFER NO. 5S-29

1 each of Bronze Pyramid, Drifted Snow, Prelude, Tiffany Rose and Valiant for **\$2.75**



OFFER NO. 5S-29A

2 of each for **\$4.75**



OFFER NO. 5S-29B

3 of each for **\$6.50**

OFFER
1 each of
varieties
here for

PRELUDE

VALIANT

DRIFTED SNOW

TIFFANY ROSE

BRONZE PYRAMID

CHRYSANTHEMUMS

PLANT THIS SPRING FOR A BRILLIANT DISPLAY IN YOUR GARDEN NEXT FALL

BRONZE PYRAMID. Big double blooms of glowing deep bronze. A strong, free-blooming plant. 3 to 3½ ft. Early October on.

DRIFTED SNOW. One of the finest whites. Full double flowers on bushy, 2-foot plants. Late September on.

PRELUDE. Very large and double. A pleasing combination of flesh-pink and maize-apricot. Sturdy, 2 to 2½-foot plants. Early September on.

TIFFANY ROSE. A very attractive flower opening full double and maturing semi-double. Deep rose with golden halo. Free blooming from late September on.

VALIANT. Very large, semi-double flowers of bright rose-scarlet with yellow center. 2 to 2½ ft. Early September on.

HEARTHFIRE. One of the most-admired red Chrysanthemums in our entire collection. A small yellow center appears in the open flower. 2 to 2½ ft. Late September on.

MEADOW GOLD. Big fluffy blooms on a bushy, 18-inch plant. Attractive pale yellow. Early September.

MEDITATION. Double, two-tone flowers of soft light jasper-red and maize-yellow with orange reverse. 2 to 2½ ft. Late September on.

TWILIGHT. Large, fuchsia-purple blooms with silvery reflex. 2½ to 3 ft. Late September on.

WHITE WONDER. Beautiful, ball-shaped white flowers on a sturdy, upright plant. 2½ to 3 ft. Late September on.

65c each; any 3 for \$1.65; any 6 for \$3.00; any 12 for \$5.50

MONEY-COLLECTIONS

OFFER NO. 5S-30

1 each of Hearthfire, Meadow Gold, Meditation, Twilight, and White Wonder for

\$3.00



OFFER NO. 5S-30A

2 of each for

\$5.50



OFFER NO. 5S-30B

3 of each for

\$7.25



NO. 5S-31

the 10

illustrated

\$4.50

WHITE WONDER

MEDITATION
MEADOW GOLD

TWILIGHT
HEARTHFIRE

Special Collections For All Purposes

Select the groups that will fill your needs. Descriptions of all varieties named in these collections are on pages 37 and 38.

5 EXTRA-EARLY VARIETIES

Start to bloom in late August or early September. All double flowered. 2 ft.

Dark Red Gold. Reddish bronze.

Golden Hours. Yellow. See color illustration.

Murmurs. Large, full double, amaranth-pink, aging to clear mallow-purple. 18 in.

Polar Ice. White.

Southwind. Bronze.

OFFER NO. 5S-32: 5 plants, 1 each of the 5 varieties, \$2.00

OFFER NO. 5S-32A: 15 plants, 3 of each, \$5.00



HUNTSMAN. Half natural size.
75c each; 3 for \$2.00. See page 37



COURAGEOUS
60c each; 3 for \$1.50
See page 37



BEACON. 75c each; 3 for \$2.00. See page 37



ERMINE
75c each; 3 for \$2.00. See page 37



GOLDEN HOURS. 60c each; 3 for \$1.50. See page 37.



MAGNIFICENT. 75c each; 3 for \$2.00
See page 37



BETTY. 50c each; 3 for \$1.25
See page 37

THE HUNTSMAN SPECIAL

All start to bloom in early October.

Argonne. Purple.
Hero. Deep crimson.
Huntsman. Scarlet-orange.
See color illustration.

Mayor James A. Rhodes. Bronze.

Orange Clusters. Semi-double, large, 3 to 4-inch blooms; brilliant deep lemon-yellow. 2 ft.

OFFER NO. 5S-35: 5 plants, 1 each of the 5 varieties, \$2.50.

3 NEW VARIETIES

All start to bloom about September 20.

Beacon. Coral-apricot. See color illustration.

Chicago. Deep crimson; semi-double.

Mary Harrison. Purple; very large, semi-double.

OFFER NO. 5S-36: 3 plants, 1 each of the 3 varieties, \$2.00.



YELLOW BLANKET. 75c each; 3 for \$2.00
See page 38

5 VERY CHOICE VARIETIES

Start to bloom from late September to October 1. All of very fine form, with good stems.

Chippewa. Aster-purple. See color illustration.

Defiance. Good new yellow.

Ermine. White. See color illustration.

Magnificent. Distinctive new red. See color illustration.

Olive Longland. Apricot-toned salmon-pink. See color illustration.

OFFER NO. 5S-37: 5 plants, 1 each of the 5 varieties, \$2.25.

3 LARGE BUTTON VARIETIES

Pepita. White.

Rosita. Pink.

Yellow Blanket. Yellow. See color illustration.

OFFER NO. 5S-38: 3 plants, 1 each of the 3 varieties, \$1.35.

OFFER NO. 5S-38A: 9 plants, 3 of each, \$3.00.

6 EARLY VARIETIES

Start to bloom between September 15 and 25. All double flowered, with good cutting stems.

Apple Blossom. Light pink.

Candlelight. White with cream center.

Courageous. Dark red. See color illustration.

Oriental Glory. Brilliant reddish bronze.

September Dawn. Deep pink.

Yellow Avalanche. Soft yellow. See color illustration.

OFFER NO. 5S-33: 6 plants, 1 each of the 6 varieties, \$2.25.

THE BETTY SPECIAL

Betty. Pink. See color illustration.

Edith. Aster-purple.

Governor Duff. Orange-bronze.

Peggy. Copper-rose and yellow.

OFFER NO. 5S-34: 4 plants, 1 each of the 4 varieties, \$2.00.



CHIPPEWA. 50c each; 3 for \$1.25. See page 37



YELLOW AVALANCHE
60c each; 3 for \$1.50. See page 38



OLIVE LONGLAND
Always dependable.
50c each;
3 for \$1.25.
See page 37



YELLOW CHIEF

EARLY SINGLE CHRYSANTHEMUMS

Single or daisy type, starting to bloom in mid-September.
Evening Sun. Bronze. **Red Bank.** Red.
North Star. White. **Tussore.** Pink.
Primula. Yellow.
OFFER No. 5S-39: 5 plants, 1 each of the above varieties \$2.00.

LATER SINGLE KOREAN CHRYSANTHEMUMS

Daisy type, starting to bloom October 1 to 15.
California Red. Brilliant red.
California Yellow. Yellow.
Christine. Deep pink.
Dubonnet. Purple-lavender.
Pollyanna. Light pink.
OFFER No. 5S-40: 5 plants, 1 each of the above varieties, \$2.00.



MAGENTA SPOON

LARGE GREENHOUSE MUMS

Each year we get more requests for this type of Chrysanthemum, and we therefore decided to list some of the best varieties of different colors. These are not always hardy outside, particularly in colder sections of the country. However, many beautiful specimen blooms can be grown if they are disbudded to one to three blooms to a stem and protected on frosty nights with a cloth. Their requirements are no different from other Chrysanthemums; good rich garden soil is all they need, and full sun wherever possible.

The varieties we have suggested are about the earliest to come into bloom. Most of them should start to bloom about the middle of October.

Garnet King. Dark red. Blooms a little later than the others.

Hilda Bergen. Dark reddish bronze.

Pink Chief. Pink.

Silver Sheen. White.

Yellow Chief. Yellow. See color illustration.

Any of the above, 50c each; any 3 for \$1.25; any 6 for \$2.25; any 12 for \$4.25

OFFER No. 5S-41: 5 plants, 1 each of the above varieties, \$2.00.



BOBBY'S RED SINGLE

A very brilliant new single. 75c each; 3 for \$2.00. See page 37.

EXOTIC SPOON CHRYSANTHEMUMS

An interesting type with dainty single, semi-double and double flowers. The petals are tubular, flattening out near the tips so that each petal resembles a miniature spoon. As easy to grow as any other Hardy Chrysanthemum.

New Spoon Varieties

All start to bloom the end of September, except Canary Spoon, which is a little later. Free blooming. 2 ft.

Apricot Spoon. Bronze-apricot. Much admired.

Canary Spoon. Large, double, yellow.

Cardinal Spoon. Cardinal-red with greenish yellow tubes.

Charm Spoon. Rhodonite-red, fading to rich dusty rose.

Fuchsia Spoon. Distinct fuchsia-purple. Large, semi-double.

Ivory Spoon. Semi-double, ivory-white.

Loveliness Spoon. Fully double, carmine-pink. Exquisite.

Magenta Spoon. Bright rosy magenta. Free blooming; sturdy grower. Fine for cutting. See color illustration.

Peach Spoon. Pretty peach blend.

Any of the above, 60c each; any 3 for \$1.50; any 6 for \$2.75; any 12 for \$4.75

OFFER No. 5S-42: 4 plants, 1 each of Apricot Spoon, Charm Spoon, Loveliness Spoon and Magenta Spoon, \$2.00

OFFER No. 5S-42A: 12 plants, 3 of each, \$5.00

Popular Spoon Varieties

All start to bloom in early October, except Bronze Spoon and Red Spoon, which are a week or two later.

Bronze Spoon. Bronze.

Jasper Spoon. Red spoons and yellow tubes.

Orchid Spoon. Light pinkish lilac.

Pink Spoon. Semi-double, pink.

Red Spoon. Beautiful red.

Rose Spoon. Luminous old-rose.

White Spoon. Double, white with creamy center.

Yellow Spoon. Double, brilliant yellow.

Any of the above, 50c each; any 3 for \$1.25; any 6 for \$2.25; any 12 for \$4.25

HARDY LATE CHRYSANTHE- MUMS

Start to bloom about October 15, just when earlier varieties are being touched by frost. Will provide cut flowers until mid-November.

Captain Cook. Rose tipped bronze. Pompon.

Pink Doty. Light pink. Pompon.

Red Spoon. Beautiful red.

The Chief. Scarlet and gold, semi-double.

White Doty. Pure white. Pompon.

OFFER No. 5S-43: 5 plants, 1 each of the above varieties, \$2.00



ORCHID JEWEL
50c each; 3 for \$1.25
See page 38



The always lovable LAVENDER LADY

50c each; 3 for \$1.25. See page 37

For the new white Lavender Lady, see Sincerity, page 37

New Hardy Chrysanthemums

New Bristol Introductions for 1950

MASQUERADE. A much hardier hybrid of the choice but tender old favorite, Jewel. Trim and compact, growing in a rounded 2-foot mass, loaded with neat, 1-inch balls of silvery rose with darker centers. Glistens in the sun of early October. A dependable addition to the darker pompons. 75c each; 3 for \$2.00.

MOONBEAMS. A vastly improved form of the famous Pale Moon, with more and better flowers on a strong stem, well spaced. Huge sprays of fluffy, soft primrose-yellow blooms, fully double and 3½ inches across. Blends splendidly with darker colors for bedding and cutting. Vigorous plant 2½ to 3 feet tall; a "must" for those who like delicate tints. October 1. \$1.00 each; 3 for \$2.75.

SINCERITY. A lovely pearly white sport of Lavender Lady. Like its parent, with fully double, 3-inch blooms on a lusty plant 2½ feet tall, a show in itself. Produces a mass of bloom, beautiful and clean. The color is faintly lavender-pink at first, but soon becomes a gleaming pure white with pearly cast. Blooms from late September on. \$1.00 each; 3 for \$2.75.

OFFER NO. 5S-44: 3 plants, 1 each of the above varieties, \$2.50

Bristol Introductions for 1949

GOLDEN CARPET. Imagine a rug made of glowing golden pompons. The plant makes a creeping mound, 2 feet or more across and only 1 foot high, glittering in the fall sun. Ideal for bedding, accenting, edging or rock garden. Nothing like it. Perfect little globes the full length of each stem. from September 15 on. 75c each; 3 for \$2.00.

HUNTSMAN. Here is a vivid newcomer, a grand fall color for your garden. Vividly brilliant scarlet-orange, overcast walnut-bronze. Flower full double, 3 inches across. Plant 2½ feet tall, lusty and hardy, simply loaded with blooms. A Carnival seedling. Oct. 10. See color illustration on page 34. 75c each; 3 for \$2.00.

POWDER PUFF. The trade has long been needing a pure white cushion. Here it is! Neat, compact, spreading 1-foot plant covered with 1½-inch, pure white, double flowers from early September on. Very hardy; a summer bloomer its second year. Grand border or rock-garden plant. 60c each; 3 for \$1.50.

Other Outstanding Bristol Originations of Recent Introduction

Apricot Glow. See page 38.

Carnival. See page 37.

Fred F. Rockwell. See page 38.

Mellow Glow. See page 37.

Summertime. See page 38.

Symphony. See page 38.

Dr. Kraus Novelties (University of Chicago Strain)

BEACON. Fully double, large, 4-inch flower of coral-apricot shading to nasturtium-orange at center. Tall, sturdy plant. Fine for cutting. October 15. See color illustration on page 34.

CHICAGO. Deep glowing carmine with orange reverse, turning scarlet toward the base. A small, clear yellow center enhances the brilliance. October 6.

DAWNROSE. Grenadine-pink to bittersweet-pink, lightening to clear, bright flesh color at the margin of the petals. October 15.

DEFIANCE. A bold flower of intense golden yellow with twilled petals. Very firm substance. Strong, upright plant with excellent cutting stems. Mid-September.

Dr. Kraus Novelties, continued

ERMINE. Large, wide-petaled, ivory-white, with 3-inch flowers on strong plants. October 1. See color illustration on page 34.

FIESTA. Large, full rounded pompon of brilliant orange-rust. Very well formed plant. October 1. (De Petris origination.)

HERO. Gleaming bright scarlet-red to spectrum-red with yellow-bronze reverse. Very free flowering. Late September.

MAGNIFICENT. Glorious 4-inch flowers of plum-red or rosy cardinal with coppery cast. Strong branches, splendid for cutting. October 1. See color illustration on page 34.

MARY HARRISON. Bright, glowing aster-purple, lightening to phlox-purple. Excellent for cutting. Very impressive. Late September.

WINTERSET. A strong-growing, large snow-white. Early October.

Any of the above, 75c each; any 3 for \$2.00; any 6 for \$3.75; any 12 for \$6.50

Other Good Dr. Kraus Originations of Recent Years

| | | |
|----------------------|--------------------|------------------|
| Charles Nye | Hearthfire | Southwind |
| Courageous | Illuminator | Twilight |
| Drifted Snow | Inspiration | Valiant |
| Glowing Coals | Meditation | Zantha |
| Golden Hours | Prelude | |

General List of Selected Hardy Chrysanthemums

50c each; any 3 for \$1.25; any 6 for \$2.25; any 12 for \$4.25, except where noted

Apple Blossom. Medium double flowers of a lovely pale pink tint. 2½ ft. September.

Autumn tide. Double. Early blooms vary from rich burnt-orange to vermilion and gradually change to apricot blended with coral, with a golden undertone. 2 ft. Mid-September.

Avalanche. Large, well-formed, double white flowers. 2½ to 3 ft. September.

Betty. Double flowers of apple-blossom-pink with deeper center. Long stems. 2½ ft. Early October. See color illustration on page 35.

Bronze Pyramid. See color illustration on page 32.

Candlelight. Double. Well-formed flowers of creamy ivory-white. Prolific bloomer; excellent plant habit. 1½ to 2 ft. Early September.

Carnival. Double. Glowing burnt orange-brown, red and golden orange. Beautifully branched for cutting. 2½ ft. Mid-October. 75c each; 3 for \$2.00.

Charles Nye. Multitudes of dome-shaped, shining golden yellow flowers on sturdy, upright stems. 1½ to 2 ft. Late September on.

Chippewa. Giant, bright aster-purple flowers, slightly incurved, 2 ft. Early September. See color illustration on page 35.

Chris Columbus. A most attractive white with cream center. Sturdy grower and free bloomer. 2 to 3½ ft. Early October.

Courageous. Double. Dark ruby-red. Strong, healthy plant. 2 ft. Mid-September. See color illustration on page 34. 60c each; 3 for \$1.50.

Drifted Snow. See color illustration on page 32.

Glowing Coals. Double. Bright deep cherry-red with orange reverse. Well-branched sprays. One of the best early reds. 2 ft. Early September.

Gold. Large double yellow. Very free bloomer and excellent as a cut flower. 2 to 3 ft. Mid-September.

Golden Hours. Double. Deep lemon-chrome; broad, overlapping petals. Very early. See color illustration on page 34. 60c each; 3 for \$1.50.

Golden Treasure. Double. Large, heavy flowers of golden yellow. 2 ft. Late September.

Harbor Lights. Soft yellow and creamy white tints; double. 2 ft. Late September.

Hearthfire. See color illustration on page 33.

Novelties from Other Sources

BOBBY'S RED SINGLE. A brilliant new single variety. When the flower opens it is bright scarlet, fading to soft orange-red. Very attractive at all stages. Grows only 18 inches high and is completely covered with 2 to 3-inch single blooms, starting in early September. See color page 36. 75c each; 3 for \$2.00.

EDITH. Rich aster-purple, making a fine effect when combined with yellow or orange. Fully double, 3-inch blooms on strong, bushy, dense plants. 60c each; 3 for \$1.60.

GOVERNOR DUFF. Large-flowered pompon type of brilliant orange-bronze, named for the governor of Pennsylvania. Fully double flowers on firm stems. Rugged plants. Late September. 60c each; 3 for \$1.60.

MAYOR JAMES A. RHODES. Named in honor of the mayor of Cincinnati, Ohio. The 3-inch, fully double blooms are brilliant, rather deep bronze, on 2-foot, bushy plants. Healthy and vigorous, starting to bloom in early October. 60c each; 3 for \$1.60.

PEGGY. A multicolor with a distinct color change after the blooms are fully open. Copper-red buds open copper-rose, shading toward yellow in the center. With these blooms are those of the other color phase—fresh yellow and white. 60c each; 3 for \$1.60.

Inspiration. Large, rich orange-red overlaid with apricot-orange. Sturdy, upright plant. 75c each; 3 for \$2.00.

Joan Helen. Semi-double. Sparkling garnet shading to purple; bright yellow center. Foliage completely hidden by bloom. 15 to 18 in. Early September.

Lavender Lady. Double; true lavender, in graceful sprays. Fine branching plants. 3 ft. Early October. See color illustration on page 36.

Lola. Double, large; glittering gold. Very attractive. 2½ ft. September.

Martin's White. Immense, pure white flowers, 4 inches across. Compact, bushy growth.

Meadow Gold. See color illustration on page 33.

Meditation. See color illustration on page 33.

Mellow Glow. Double. Blend of orange-buff, peach-pink and bronze. Sturdy, branching plant 2½ ft. Early October. 60c each; 3 for \$1.50.

Mrs. Pierre S. du Pont III. A blend of peach-pink, rosy salmon and fawn. Strong, healthy grower. 2 to 3 ft. Early October.

Olive Longland. Apricot-toned, salmon-pink flowers 3 inches across. 2 ft. Late September. See color illustration on page 35.

Oriental Glory. Double. Brilliant oriental red, large flowers with pointed petals. One of the very best. 2½ ft. Late September.

Pink Surprise. Brilliant, true pink with incurved center petals. Large, 3½-inch flowers. 2 to 2½ ft. Mid-September. 60c each; 3 for \$1.50.

Polar Ice. Clear blue-white, 3 inches in diameter. Free flowering. 1½ to 2 ft. Early September.

Prelude. See color illustration on page 32.

Red Gold. Double. The brightest of all pompons. A lively combination of red and orange-gold. 1½ ft. Early September.

Red Riding Hood. Fully double flowers 3½ inches in diameter, of iridescent bright red. Strong growth. 2 to 2½ ft. Early October.

Red Velvet. Double flowers of medium size, opening velvety crimson and becoming darker. Rich fragrance. 2 ft. Early October.

September Dawn. Double pink flowers about 3 inches across. Hardy, vigorous and free flowering. 2 ft. Mid-September.

Sequoia. Double. Large, exquisite rich mellow-amber flowers. 2 ft. Late September.

GENERAL LIST OF SELECTED HARDY CHRYSANTHEMUMS, continued

50c each; any 3 for \$1.25; any 6 for \$2.25; any 12 for \$4.25, except where noted

Southwind. Double. Masses of large Chinese-red flowers toned salmon-buff, borne on sturdy much-branched plants. 1½ ft. Early September.

Symphony. Three-inch, double blooms of mauve-rose overcast with soft coppery rose. 3 to 4 ft. Early October.

The Chief. Large, semi-double flowers of bright scarlet and gold. 3 ft. Mid-October.

Tiffany Rose. See color illustration on page 32.

Twilight. See color illustration on page 33.

Valiant. See color illustration on page 32.

Violet. Full double, dahlia-like bloom of good color. 2 ft. Late August.

Yellow Avalanche. Large, fluffy, double flowers of brilliant soft yellow. 2 ft. Early September. See color illustration on page 35. 60c each; 3 for \$1.50.

Zantha (Goldilocks). Well-formed, ball-shaped flowers of canary-yellow. Very fine. 2 ft. Early September.

Hardy Chrysanthemums of Various Types

Button-flowered Varieties

Very free blooming and excellent for cutting. The button-like flowers are ½ to 1 inch across.

Irene. Dainty little pure white buttons. Without a doubt the finest white button. 2 ft. Early October.

Jewelry. Deep rose-colored flowers. 2½ to 3 ft. Mid-October.

Ourray. Masses of rich bronze flowers with a coppery glow. A reliable, hardy variety. 2½ ft. Early October.

Pepita. Double. Densely quilled button pompon of eggshell-white with darker center when young, changing to pure white with cream center. 1½ to 2 ft. Early October.

Rosita. Rust-bronze suffused strawberry-pink. Free blooming. Late October.

Yellow Blanket. A cushion-type Mum with lovely clear yellow button flowers. See color illustration on page 35. 75c each; 3 for \$2.00.

Yellow Irene. Same as Irene but the color is a lovely pale yellow.

Any of the above, 50c each; any 3 for \$1.25; any 6 for \$2.25; any 12 for \$4.25, except where noted

The New Jewel Mums

These are healthy growers and very free bloomers. The flowers are ball-shaped, averaging 1½ to 2 inches in diameter and come on stiff, long stems; excellent for cut-flower use. Height is about 3 feet. In full bloom in early October.

Orchid Jewel. See **White Jewel.** color illus. on page 36.

Yellow Jewel. Yellow; bronze undertones.

Purple Jewel. bronze undertones.

Any of the above, 50c each; any 3 for \$1.25; any 6 for \$2.25; any 12 for \$4.25

Newer Azalea or Cushion Mums

Low, bushy growth forming a cushion-like plant completely covered with 2-inch, double or semi-double flowers. Fine for rock gardens and borders. Bloom starts in early September; after plants are established they often begin to bloom in July.

Achievement. An amazing blend of varying colors—apricot, orange, golden yellow, and orchid throughout the season. The general color in full bloom is soft bronze-pink.

Apricot Glow. Double, 2½ inch, apricot-bronze flowers. Grows about 18 inches tall and as much in diameter.

Coral Sea. Salmon-buff suffused coppery rose. Very hardy; dwarf.

Dahlia Mum. Quilled petals like a cactus dahlia of bright wine-red. 1½ ft.

Early Harvest. Masses of mahogany-orange flowers, large and fully double. 15 to 18 in.

Early Major Cushion. A new pink form of very compact growth and free-blooming habit. 15 in.

Nanook. Dwarf, compact plant with medium double, white flowers. Free blooming. 15 in.

Newman Yellow. The most-admired yellow cushion Mum in our collection. A most brilliant color. 15 in.

Pink Cushion Improved. Deeper color than the old Pink Cushion or Azaleamum.

Powder Puff. Finest white cushion. See page 37.

Any of the above, 50c each; any 3 for \$1.25; any 6 for \$2.25; any 12 for \$4.25

Collection of Newer Cushion Mums

6 Choice and Distinct Varieties

Achievement **Early Major Cushion**
Apricot Glow **Newman Yellow**
Early Harvest **Powder Puff**

OFFER No. 5S-46: 6 plants, 1 each of the 6 varieties, \$2.50.

Single or Daisy Type Mums

These single-flowered Mums will remind you of Shasta daisies. They are very attractive.

California Red. Very brilliant red. 2½ ft. Mid-October.

California Yellow. Bright yellow.

Dubonnet. Lovely single amaranth-pink. 2 ft. Early October.

Evening Sun. Large single flowers carried erect. Carnelian-red shading to burnt-orange with golden center. 2 ft. Mid-September on.

Nancy. Large single flowers of bright crimson changing to deep pink. 1½ ft. Early October.

North Star. Single, pure white flowers. Early, and extremely hardy. 2 ft. September.

Pollyanna. Graceful single flowers of luminous Mayflower-pink with a rosy salmon sheen. 2 ft. Early October.

Primula. Lovely single, lemon-yellow flowers 2 inches in diameter, in a long, much-branched cluster. 2½ ft. Late September to November.

Red Bank. Nearly single, 2 to 2½ inches across; clear bright red with yellow center. 18 to 20 in. Mid-September to late October.

Summertime. Pat. 689. Brilliant yellow, single flowers, 2 inches or more across. Noticeably fragrant. Compact plant, 20 inches high and over 2 feet wide. Mid-July to October. 75c each; 3 for \$2.00; 6 for \$3.75.

Tussore. Semi-double. Exceptionally fine orchid-pink. Mid-September.

Any of the above, 50c each; any 3 for \$1.25; any 6 for \$2.25; any 12 for \$4.25, except where noted

Cushion Pompons

Cushion-like plants covered with ball-shaped, 1 to 1½-inch blooms. Ideal for borders and rock gardens. 1 to 1½ ft. September.

Lavender Lassie. Like Lavender Lady but in a smaller pompon form. Two-inch, lavender flowers. Mid-September.

Pygmy Rose. Pink flowers. Very dwarf, upright. 1 ft. 60c each; 3 for \$1.50.

September Gold. Huge sprays of brilliant golden yellow flower. 1½ ft. Mid-September.

Any of the above, 50c each; any 3 for \$1.25; any 6 for \$2.25; any 12 for \$4.25, except where noted

Lovely Pompons

Ball-shaped flowers averaging 1½ to 2 inches across, carried on 2 to 4-foot plants.

Argonne. A full, rounded button pompon of rich amaranth-purple. 60c each; 3 for \$1.50.

Captain Cook. Clear deep rose petals, tipped with golden bronze. 4 ft. Late October.

Dark Red Gold. Pleasing dark ruby color. 60c each; 3 for \$1.50.

Early Wonder. Double. Large, soft pink pompon, blending to peach-blossom-pink when fully open. Excellent for cutting.

Fred F. Rockwell. Pat. 718. A gorgeous blend of bronze and orange-scarlet. Often has 75 blooms in a single spray. Very hardy. 2 ft. Early October. 75c each; 3 for \$2.00.

Illuminator. Very dark, brilliant crimson-red pompon. 75c each; 3 for \$2.00.

Pink Doty. Light pink pompon on long stems. 3 to 3½ ft. Mid-October.

White Doty. Large heads of pure white pompons on tall spikes. Fine for cutting. Late.

White Wonder. See color illustration on page 33.

Any of the above, 50c each; any 3 for \$1.25; any 6 for \$2.25; any 12 for \$4.25, except where noted



CHRYSANTHEMUM, Early Major Cushion

Super New English CHRYSANTHEMUMS

Last winter we contacted one of the foreign growers who had been raising new varieties of English Chrysanthemums, and under a special permit we imported a wonderful collection of all the latest sorts in this group. When they came into bloom last fall for the first time, they created quite a stir with us as well as with hundreds of visitors who saw them. Their colors, the size of the blooms and their free-flowering habit were unequalled by any other English Mums we had ever seen. Practically all of them have very large flowers from 4 to 6 inches across. They can either be grown to give a mass of blooms or can be disbudded and grown for exhibition purposes. Our supply of these superior new varieties is very limited; therefore, we would suggest that you send your order as soon as you can, to avoid disappointment. They are no harder to grow than any other hardy garden Chrysanthemums. Any good garden soil, in full sun, will produce excellent blooms.

Balcombe Brilliance. Brilliant red, medium-sized flowers. 2½ ft. Early October on. \$1.00 each.

Balcombe Glory. Solid, incurving, yellow blooms. 2½ ft. Early October. \$1.00 each.

Balcombe Supreme. Brilliant crimson with golden reverse. Solid blooms of good size. Early October. \$1.00 each.

Balcombe Triumph. Bright red with light bronze reverse. Large, solid flowers, slightly incurved. 2 to 2½ ft. Late September to early October. \$1.00 each.

Bronze Barbara. Very beautiful light bronze; large 2½ to 3 ft. Early October. \$1.00 each.

Champion. Large, clear yellow. Beautifully formed blooms on straight, upright stems. 3 ft. Early October. \$1.50 each.

Cotswold Gem. One of the earliest English Mums to bloom, with the purest white flowers of medium size. Very free blooming. 2 ft. Mid-September. \$1.00 each.

Crimson Banner. Large, crimson blooms, full double at opening, showing little center at maturity. 2 ft. Late September on. \$1.00 each.

Egerton Sweetheart. Medium-sized flower of beautiful salmon-bronze. Free bloomer. Late September on. \$1.00 each.

Flaming Torch. Bright crimson-scarlet. Free bloomer and vigorous grower. 2½ ft. Early October on. \$1.00 each.

Flavius. Large, double blooms of buff-yellow, slightly incurved at center. 2 to 2½ ft. Late September on. \$1.00 each.

Frieda Pierce. Soft rose-pink; center suffused with yellow and gold. Blooms of exhibition size. Early October. \$1.00 each.

Gillian. Very large, single flowers of perfect form, having a double row of petals of vivid crimson-scarlet. Good growing habit. 2½ to 3 ft. Mid-October on. \$1.00 each.

Glorious. Very beautiful, incurving flowers of clear pink with silvery reverse. Good upright growth. 2 to 2½ ft. Early October on. \$1.25 each.

Hurricane. Large, brilliant crimson, reflexing flowers with rose petals. Very good all-round variety. 2½ to 3 ft. Early October on. \$1.00 each.

Lytic. Very pretty, deep shell-pink. Full blooms with reflexing petals. 2½ ft. Early October. \$1.25 each.

Mayford Pink. One of the very largest, with long petals. A most exquisite shade of rose-pink with golden center. 2 to 2½ ft. Early October. \$1.50 each.

**Egerton
Sweetheart**

Glorious

Champion

Hurricane

Tempest. Bright crimson with a golden reverse. Very large, reflexing flower. 2 to 2½ ft. Early October. \$1.50 each.

OFFER NO. 5S-47: 5 plants, 1 each of Bronze Barbara, Glorious, Hurricane, Perfection and Primrose Barbara, for \$5.00.

Six Popular English Mums of Recent Introduction

Alabaster. Incurved, 5-inch, white blooms. 2 to 3 ft. Early October.

Cerise. Large, double, cerise blooms with quilled petals. Good habit of growth; free blooming. 3 to 4 ft. Early October.

Garnet Gem. Medium-sized, double flowers of very rich deep crimson. 1½ to 2 ft. Early October.

Henry Sutliff. A most brilliant yellow of large size. Free bloomer. 2 to 3 ft. Early October.

Indiana. Large, double, rich bright red with deeper center. Flower will show open center when fully open. 2 to 3 ft. Early October.

Una. A good clear pink of medium size and good form. 2 ft. Early October.

Any of the above, 50c each; any 3 for \$1.25; any 6 for \$2.25; any 12 for \$4.25

OFFER NO. 5S-48: 6 plants, 1 each of the above varieties, \$2.00.

OFFER NO. 5S-48A: 18 plants, 3 of each, \$5.00.

**CARROLL GARDENS
BLUE PERENNIALS
FOR YOUR GARDEN**

These five Newer Blue
Perennials will provide
blue flowers from late
in May to late October
COLLECTION:

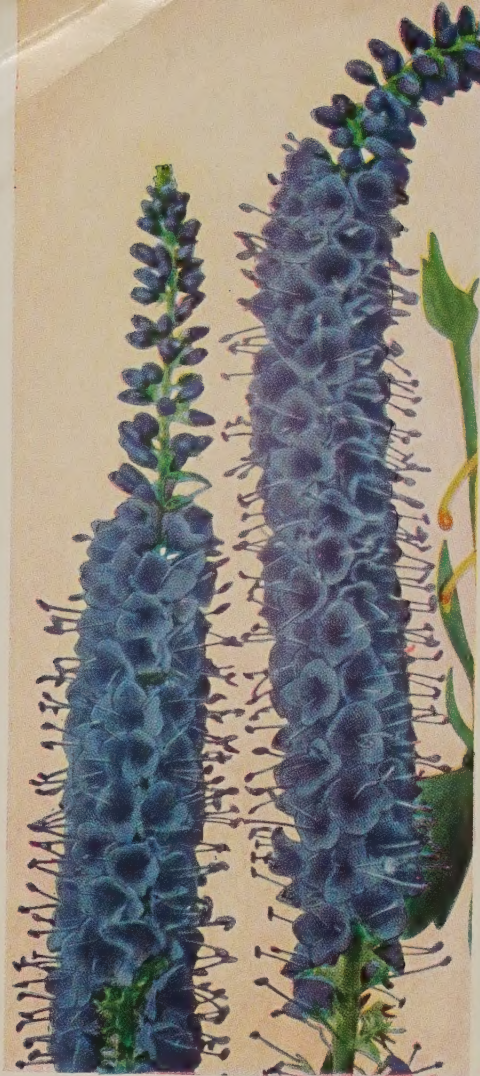
Offer No. 5S-49: 5 plants,
1 of each **\$3.00**

Offer No. 5S-49A: 15
plants, 3 of each **\$7.75**



ASTER Frikarti

Large, lavender-blue daisies on branching, 2 to 2½-foot plants, from July to frost. Plant in good soil in full sun or part shade. 3 for \$1.50; 6 for \$2.75; 12 for \$4.75; 60c each.



VERONICA, Blue Champion

A novelty of merit, being a form of the well-known *Veronica subsessilis* but much sturdier and a freer bloomer, with lighter blue flowers. It is an excellent plant for late summer bloom. Grows 2 to 3 feet high and looks particularly well when planted with any good pink or white phlox. This is one of Mr. Cummings' originations, and what a fine job he did! Plant in good average garden soil, in full sun or light shade. 3 for \$2.25; 6 for \$4.25; 85c each.



**SCABIOSA,
Giant Hybrid**

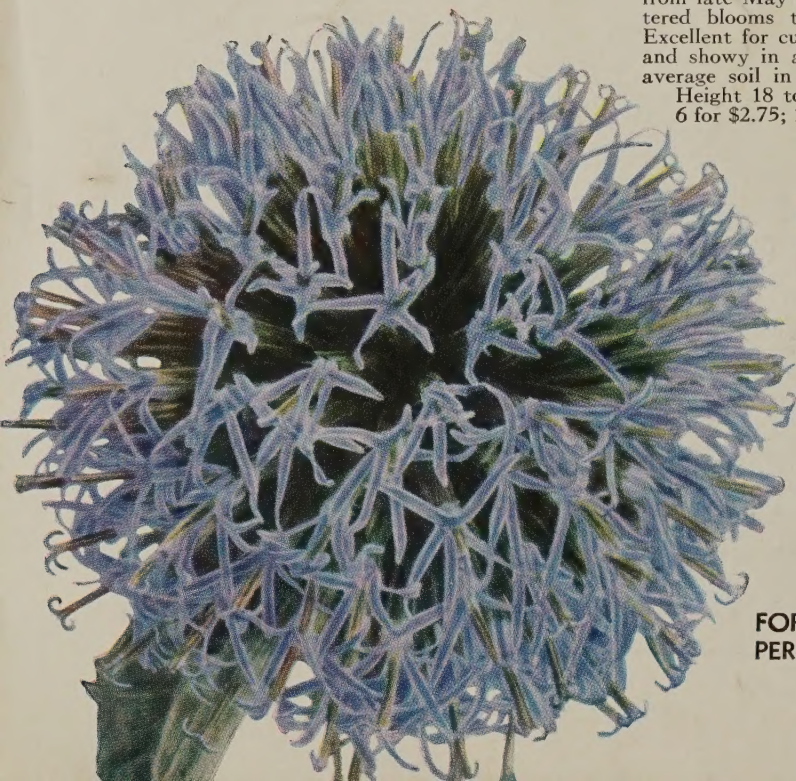
The lovely perennial Scabiosa produces many flowers of various shades of blue from late May to June, and a few scattered blooms throughout the summer. Excellent for cut flowers and interesting and showy in a garden. Plant in good average soil in full sun or part shade.

Height 18 to 24 inches. 3 for \$1.50; 6 for \$2.75; 12 for \$5.25; 60c each.



SALVIA Pitcheri

(Hardy Deep Blue Sage.) Grows 3 to 5 feet tall and blooms in September and October. Easily grown in full sun. Fine for cutting. 3 for \$1.50; 6 for \$2.75; 12 for \$5.25; 60c each.



**ECHINOPS
Taplow Blue**

For background planting, growing 3 to 4 feet tall and blooming from June on. The more you cut the flowers, the more it blooms. The ball-shaped flowers make an excellent accent for any bouquet, they also may be cut and dried. Plant in any garden soil, singly or in groups. 3 for \$2.00; 6 for \$3.50; 75c each.

FOR COMPLETE LIST OF
PERENNIAL PLANTS, SEE
PAGE 5 TO 17